

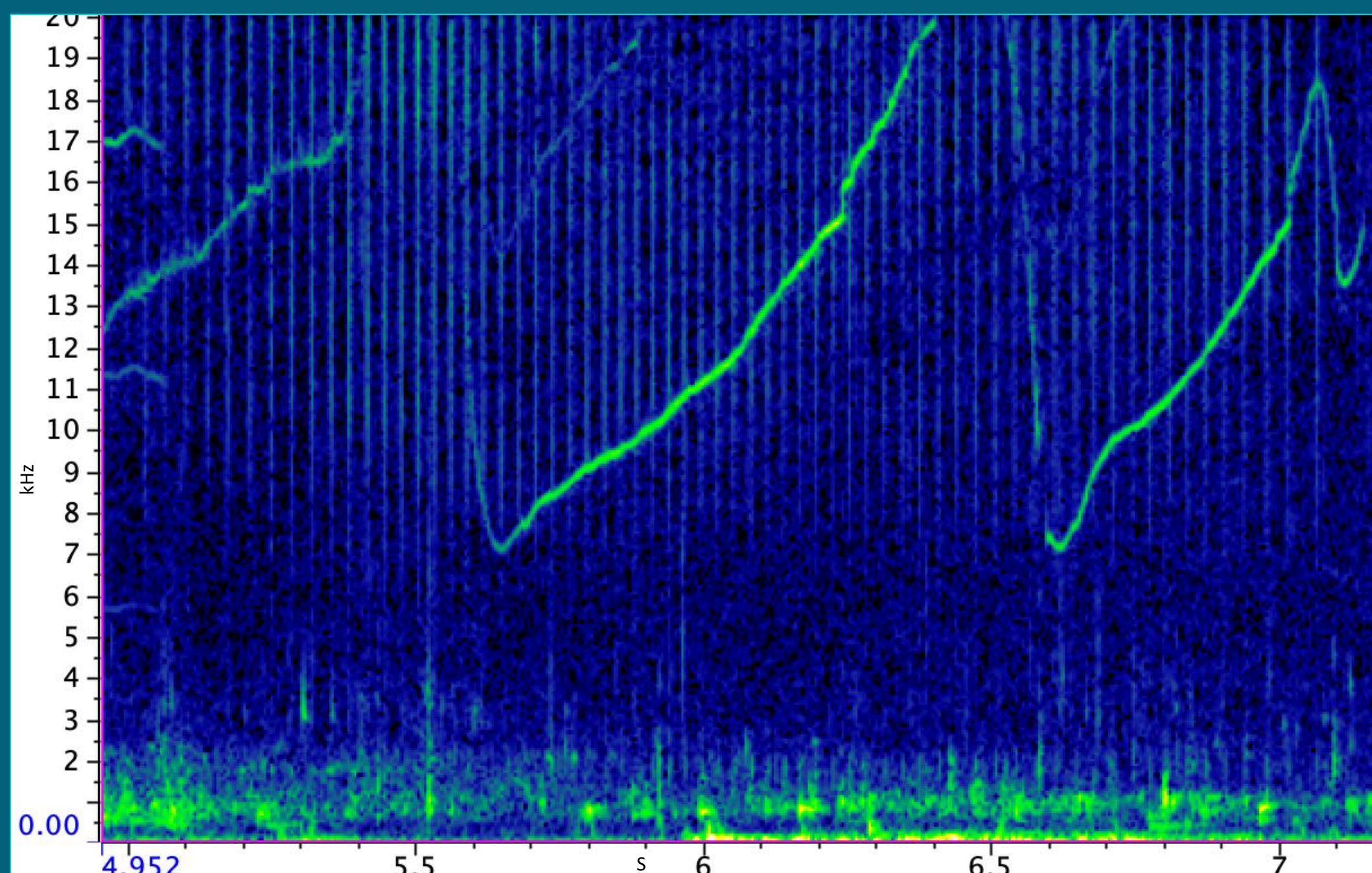
# Characterizing burst-pulse vocalizations in bottlenose dolphins (*Tursiops truncatus*)

Hayley Knapp<sup>1,2</sup>, Dr. Kathleen Dudzinski<sup>1,2</sup>, & Dr. Rindy Anderson<sup>1</sup>

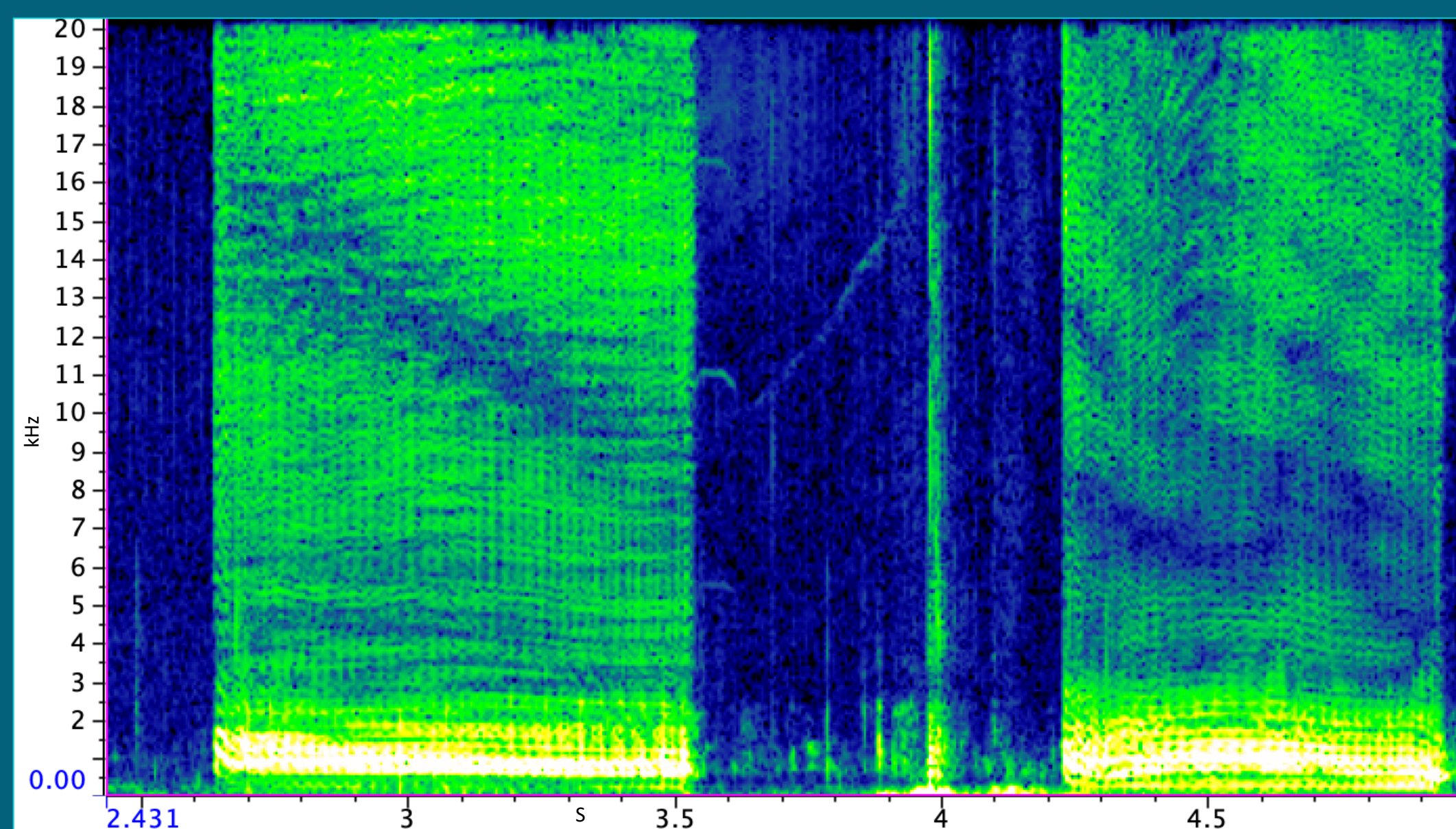
<sup>1</sup>Florida Atlantic University Biological Sciences, <sup>2</sup>Dolphin Communication Project

## The problem

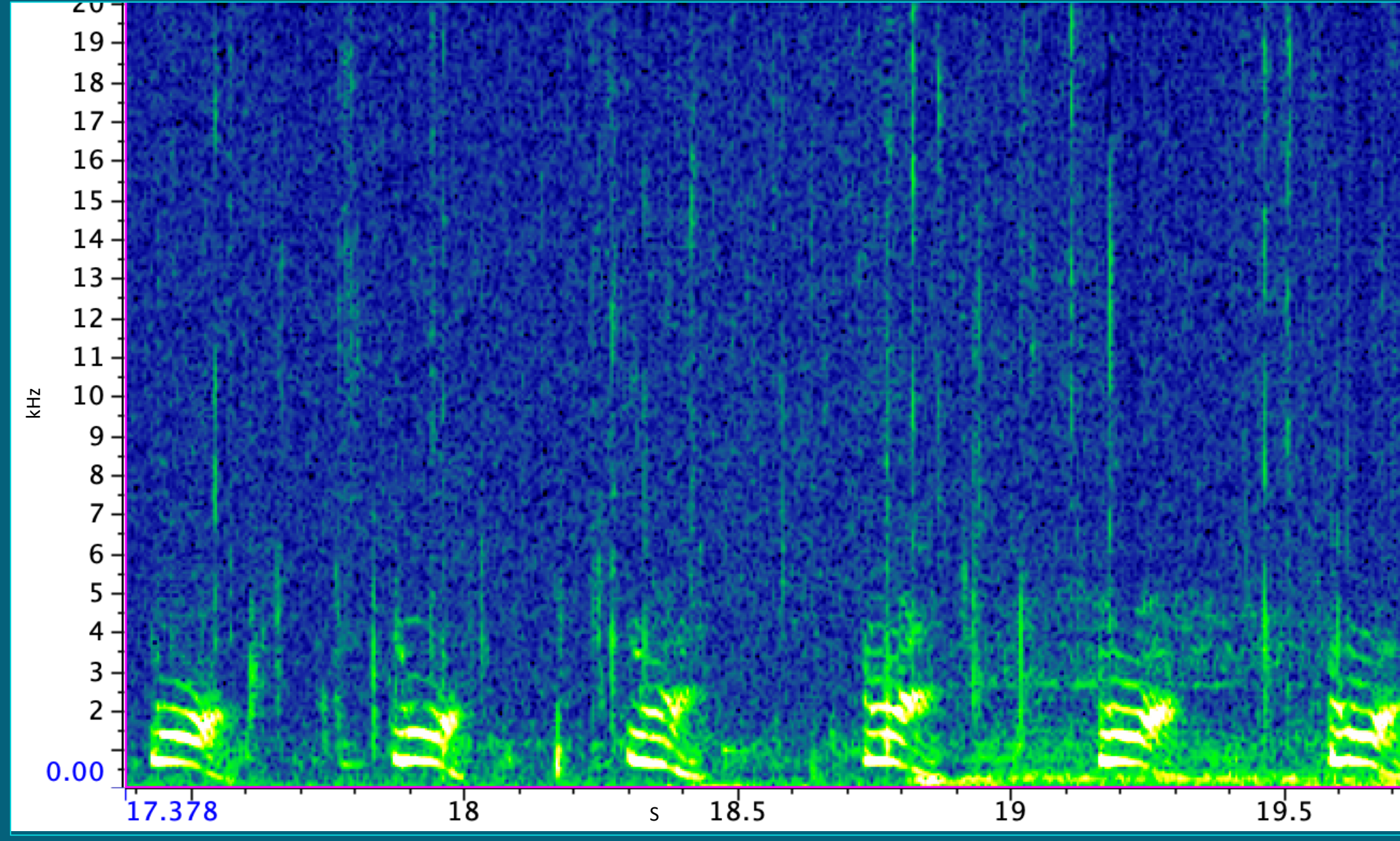
- An understudied, complex, social sound produced by bottlenose dolphins is a burst-pulse vocalization (BPV).
- BPVs are characterized onomatopoeically (oh my!)



Whistle Spectrogram. Whistles are social calls that contain individual identity that develops in the first year.



BPV Spectrogram depicting a social call during high-arousal interaction.

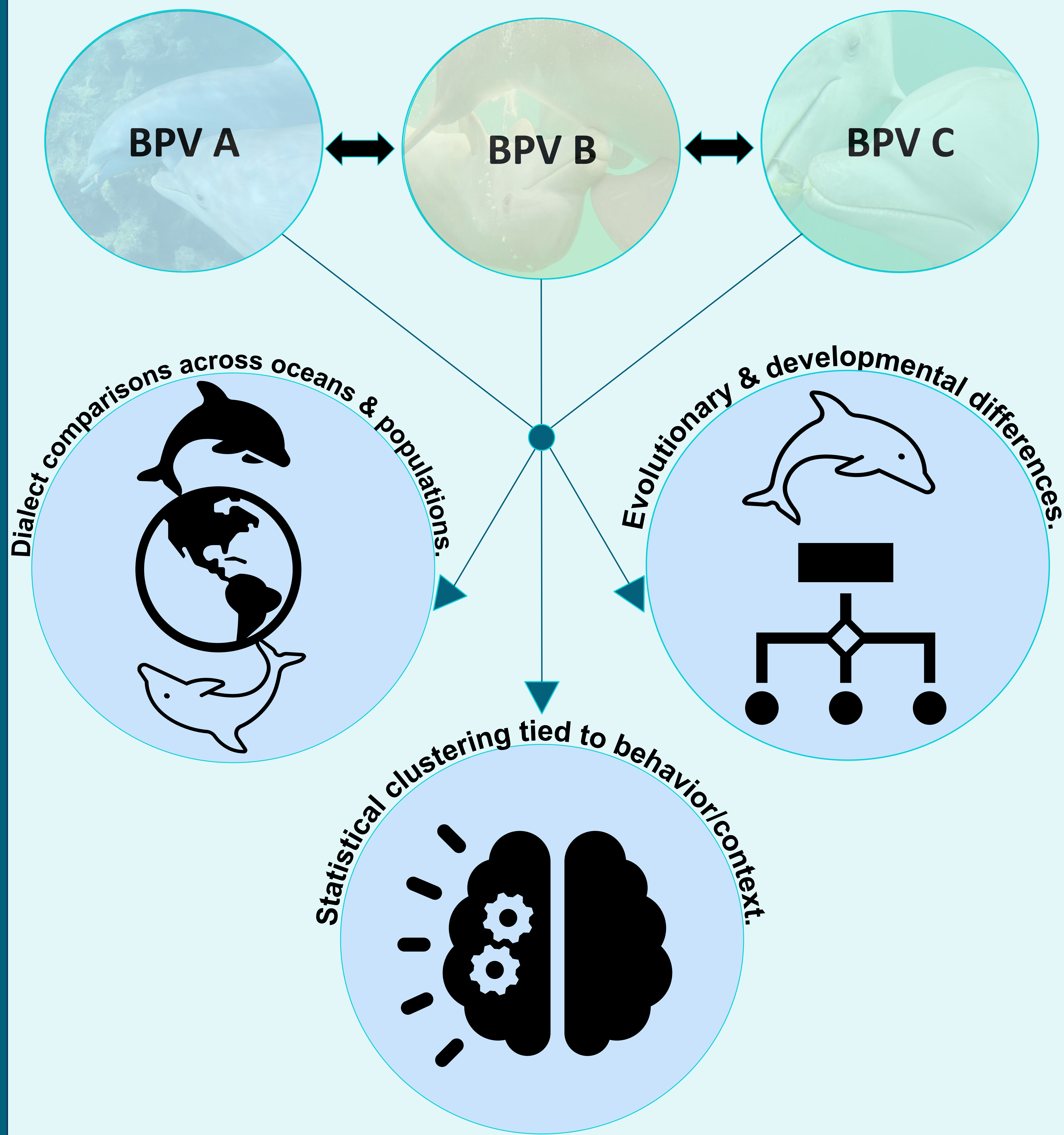


BPV Spectrogram. BPVs have an unknown developmental period and are labeled inconsistently and onomatopoeically.

## Research goals

Old terminology = inconsistent & onomatopoeic ❌

Prospective terminology = consistent & objective ✅



## Objectives

- Characterize burst-pulse vocalizations with acoustic parameters
- Assess behavioral correlations & contextual use
- Examine the development of burst-pulse vocalizations



Study site: Bailey's Key at The Roatan Institute for Marine Sciences houses ~20 bottlenose dolphins.



## So what?

- To aid dolphin conservation in a noisy world
- To compare communication across species
- To understand their cognitive abilities

## Acknowledgements

Thank you to the Dolphin Communication Project volunteers, interns, and other students for their assistance in this research. Thank you to the John Nambu Scholarship for Molecular Biology fund and to the BABEL lab students.

## Affiliations & references