



 ► FIELD UPDATE....2


 ► NICOLE'S NEW ROLE....3


 ► DCP'S BIMINI DOLPHIN ECOTOUR....5

# The Dolphin gazette

NEWSLETTER FOR THE DOLPHIN COMMUNICATION PROJECT

*The Dolphin Communication Project (DCP) is focused on the dual goals of scientific research and education. Our mission is to promote the scientific study of dolphins and inspire their conservation.*

## Happy 2021!

Dear Reader/DCP supporter,

Happy 2021 - even as we are firmly into our second month of the year! At DCP, we hope everyone continues to be healthy and safe and that this year will be a positive one. I also hope you will enjoy this issue of the *Dolphin Gazette*. We have been busy with data analyses, and also include an update (page 2) from a brief visit to Roatan in January. We (hopefully) will be able to welcome participants back to Bimini this year (page 4), on an [eco-tour](#), at least! We have a new student (Page 3). and more new webinars (page 5, and DCP's website and YouTube channel) for you this spring! And, I am delighted to update the DCP community about Nicole, our first ever post-doc! You might remember Nicole as a volunteer, intern and student with DCP - we welcome her continued collaboration!!

Thank you for your continued interest and support of our research and education programs! Elli, Stan & Tank are to the right, trying to entice me to play!

Happy Reading! Cheers!

~Kathleen



## In this issue

Update from the field | Postdoc Nicole! | Meet Brice | Come to Bimini | Online Education | RIMS Programs | Patron Adoption & Sponsor A Classroom | Spotlight on Kiwi | Jumble

### Mailing Address

Dolphin Communication Project  
 P.O. Box 7485  
 Port St. Lucie, FL 34985  
 USA

FL Solicitation of Contributions  
 Reg. #: CH42894 (also see page 10)

### Thank You volunteers & students!

Thank you to Manon for her continued dedication. Thanks also to Taylor, Emil & Kaiya, our remote volunteers, and Amilynn, our Social Media Intern. And, welcome to Brice! Your contributions to our research and education programs are very valuable!

### Internships

If you are interested in interning with DCP in the field next summer, apply for an SFE or full summer internship. Please note, most other internships are office-based and do NOT include field work. Check out the web site before contacting us at [info@dcppmail.org](mailto:info@dcppmail.org).

# Update from the Field: Roatan, Honduras

*Submitted by Kathleen Dudzinski, PhD (DCP Director)*

For the first time in a very long time, I was a bit anxious about travel in January. I think it was the prep - getting my COVID rapid test (negative - phew!), confirming all the paperwork and details required to enter Honduras (on Roatan), and making sure I had everything packed for travel with limited carryon. The gate area was (blissfully?!) empty for the first 1-1.5 hrs that I was at Miami International Airport. And, my flight in was about half full. My anxiety vanished once I was on the plane, and even more so once we landed. The immigration line was short (not a lot of visitors) and we had to show our negative COVID test results. The rest was the same pattern - grab bags, go through customs, meet up with the AKR team in the airport. It was wonderful to see Greg and Israel and the Anthony's Key Resort (AKR) shuttle bus. Sadly, that day, I was the only guest! Ron B. joined me on Saturday but occupancy at the resort was light much of our week. Mask wearing and social distancing are promoted and I felt very safe at AKR. Since it was just me and Ron, we started data collection at 07:30 each morning and we were able to get a second session in each day after the morning feed. So, I was able to collect about 6-7 hours of video data. And, the water was VERY clear. So, we have lots of data to process (for video logging and behavior sampling).

It was wonderful to meet Rona and Rocky who are Alita and Maury's sons, respectively. And, after the first day or two of excitement and much curiosity, the dolphins seemed to recall that I was boring ... and went about their own business. I'm looking forward to continuing the analyses and to returning in May!

Cheers

*~Kathleen*



*Gate area before Kathleen's flight to Roatan!*



*Kathleen, Humberto, Ron - mask wearing at our best!  
On our way to morning data collection!*



*The gang greeted me after one of my first entries!*



*Calli (left) and Lenca (right) tried to get me to play  
with seaweed one morning!*

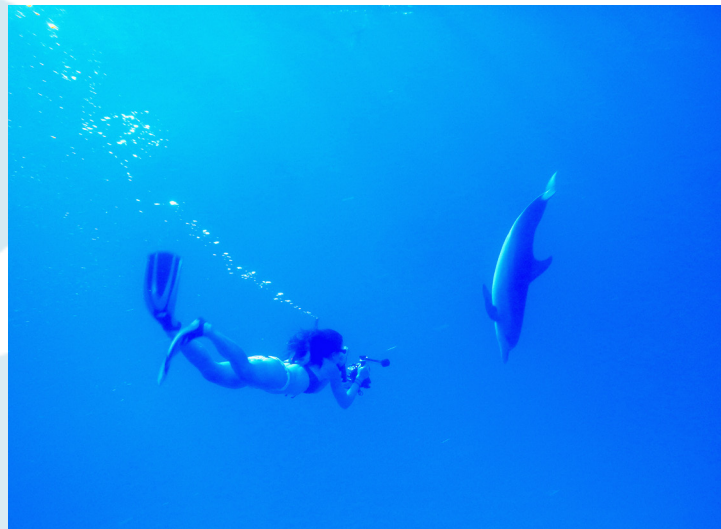


*Wearing a different  
type of mask! ready for  
data collection!*



# Nicole in a new role at DCP!

My journey with DCP began in 2012, when I started as a volunteer with Dr. Kathleen in the CT office. There, I gained an understanding of proper research protocol, learned dolphin ID skills, and had the chance to explore behavioral questions I had never considered before. Less than a year later, I was fortunate enough to apply, and be selected, for the summer field internship with Kel at the Bimini field site. It was there that I learned how exciting field work can be; how watching animals in their natural habitat and social system can spark so many wonderful questions! I have had the opportunity to assist with field



courses, ecotours, and Bimini data collection every year since that momentous internship in 2013 (with the unfortunate exception of 2020...) A couple of years after my internship I decided to pursue graduate work and was lucky enough to have the support of Kathleen and Kel, as well as to have the experience with DCP under my belt – I was now equipped to properly ask research questions and gather data to try and uncover the answers. Thus began my master's work focused on associations among the Atlantic spotted dolphins that call the waters around Bimini their home.

Continued page 9...

## Meet Brice



Brice has just joined the team as DCP's newest Master's student. Based in Dr. Amy Hiron's lab at Nova Southeastern University (Florida), Brice will explore passive acoustic data from DCP's Bimini, The Bahamas field site. By pure coincidence, Brice is yet another DCP team member originally from Connecticut (Kathleen, Kel & Nicole all are, too!). She grew up snowboarding and hiking mountains, but by the time she was twelve years old, she was a certified scuba diver who fell in love with the ocean. Inspired to be a marine biologist, she headed to sunny South Florida to attend Nova Southeastern University

and graduated with a B.S. degree in Marine Biology in 2017. Brice joined Dr. Hiron's CMOL (Charismatic Megafauna and Oceanography Laboratory) as an independent researcher working with stable isotope analysis and dentition aging on pinnipeds. Along the way, she also became a PADI Divemaster and worked on several charters to sharpen her overall scuba diving and boat deckhand skills. After graduation, Brice interned at Oceans Research in Mossel Bay, South Africa, and volunteered at Hubbs SeaWorld Research Institute in Melbourne Beach, Florida. Now, she's back at NSU for her M.S. journey! Dr. Hiron's connected Brice with Kathleen and DCP. Soon, she'll begin a thesis project on vocal behavioral patterns of dolphins off Bimini, The Bahamas!

"I have always wanted to dive deeper into understanding dolphin communication so being a part of the DCP team is a dream come true!" ~Brice

# Experience the dolphins of Bimini with DCP!



**Sunday 11 July -  
Friday 16 July 2021**

Oh, how we miss having guests at our Bimini, The Bahamas, field site! We are hopeful that summer 2021 will bring confidence in traveling safely. If it does - we hope you'll join us!

## ***What is a Bimini ecotour with DCP like?***

Programs are 5-nights, but **we encourage guests to add a 6th night and arrive on 10 July**. This will help ensure you don't miss anything on Sunday 11th. Guests stay at the small, locally-owned and operated Sea Crest Hotel & Marina. Each morning, there is an optional DCP-led activity: presentation, round table discussion or beach clean-up - or free time to explore Bimini's reefs, mangroves or beaches. Each afternoon, we head out with the local boat operator with the most experience taking folks to see the wild dolphins of Bimini.

## ***What else is included?***

The package includes all meals, beginning with lunch on Sunday and ending after breakfast on Friday. With tasty snacks on each boat trip, bellies will be happy! Rental snorkel gear is included, though we recommend folks bring their own to ensure the best fit. All of your Bahamian taxes are included, too!

## ***What is not included?***

Transportation to Bimini, gratuity for hotel staff & boat crew, additional drinks, snacks & gifts, travel insurance, COVID-19 insurance, travel visas, or pre-trip testing

## ***Why choose this as my vacation?***

DCP participants get all the fun of a swim-with-wild-dolphins vacation, but they learn much more and their participation gets DCP much (much!) needed boat time to collect data on these amazing creatures. Win-Win!

## ***What about COVID-19?***

There are currently no active cases of COVID-19 on Bimini. While occasional cases do still pop up, the use of masks, encouragement of social distancing and testing requirements for visitors has helped reduce transmission. And, the Bahamas government hopes to begin vaccinating Bimini residents in March. DCP will have strict and clearly communicated COVID-protocols, to keep program participants and the local community safe.

**Contact DCP today if you are interested  
in registering!**



# Online Dolphin Education

Something for everyone!

**DCP webinars** returned in 2021 with both Dolphin Lessons & Deep Dives in the line up.

**Dolphin Lessons: Most 1st & 3rd Tuesdays, 1p ET**

**Deep Dives: Most 2nd & 4th Thursdays, 1p ET**

*(Dolphin Lessons have a password; contact DCP if you have not already received it.)*



A huge thank you to everyone who joins live and those who catch the recordings. 2020 topics included photo-ID, marine debris, dolphin friendships, communication and more. 2021 began with Social Network Analysis and Turtle Conservation, with much to come. Check out these links for all our webinar recordings:

[Webinars on DCP Website](#)

[Webinars on DCP's YouTube Channel](#) (subscribe now!)

**The Dolphin Pod** is appropriate for all dolphin lovers and our recent relaunch adds a comedic angle. [Click here to have a listen](#) directly on DCP's website, or find *The Dolphin Pod* wherever you get your podcasts.

**Kids Science Activities** continue to be accessible on our website - [just click here](#). From interactive activities for elementary school students to word searches, jumbles, and coloring sheets, there is something for everyone. Did you catch our Valentine's Day cards? Dolphin-themed, of course!

Check Page 7 in this issue of the *Gazette* for news on [Sponsoring A Classroom](#).

## Successful GoFundMe Campaign: THANK YOU!

**Thank you** to everyone who supported our Year End fundraising campaign on GoFundMe. Like many small businesses, non-profit or otherwise, COVID-19 severely impacted DCP's revenue in 2020. We are very grateful to every single person and family who donated and/or shared our call for donations. You helped ensure we could start the New Year on stronger footing.

In addition to those who supported this specific fundraiser, we extend our gratitude to all of those who donate throughout the year, including our sustaining members and those make recurring, monthly donations. Knowing we can count on these funds each month goes a long way. Thank you!

Ready to donate to DCP? [Click here to make a donation](#) or [Click here to become a member](#)!



# RIMS Program Updates

*Resuming DCP's studies of the dolphins on Roatan in 2021!*

## DCP's 20th Anniversary "2nd year" - Eco-tours to Roatan!

**Join Kathleen on Roatan at Antony's Key Resort (AKR):**

**May & October 2021**



DCP returns to Roatan in 2021, at least three times (January was great!), to collect data with eco-tour participants.

This assumes that COVID-19 will not have severely impacted our ability to travel internationally. (Stay Tuned to the website for updates.)

We are coordinating two more week-long programs in May (1-8 May 2021) and October (8-15 Oct. 2021). As always, spaces are filled on a first-come, first-served



basis. Updates will be available in the next issue of the *Dolphin Gazette* and in a field blog post to the DCP home page, as well as to the DCP RIMS eco-tour page. You can also contact DCP by email for more information.

Check out the [RIMS Eco-tour page](#) (look under the Education tab) to learn more about logistics and other details. Or send DCP an inquiry by email ([info@dcpmail.org](mailto:info@dcpmail.org)).

**[www.dolphincommunicationproject.org](http://www.dolphincommunicationproject.org)**



# New Options to Support DCP!

*We are proud to offer new ways to support our mission - and spread dolphin joy!*

## Patron Adopt-A-Dolphin

DCP's Patron Adopt-A-Wild-Dolphin program allows you the opportunity to adopt one of four specific dolphins from our Bimini, The Bahamas, field site to have an even greater impact on DCP's mission. The extra money raised from these kits will be funneled directly into DCP's Bimini field site research and related education programs. As a thank you for purchasing a Patron kit, DCP streamlined the kit design to make the details more concise and access more direct to our adoption content, including several video/audio files as electronic links online (or available on USB drive for the print version of this Patron Adoption Kit). Choose from Tina, Prince William, Vee, and Paul - four long-time residents of the warm turquoise waters near Bimini!



Patron Adoption kits:  
Electronic version: \$135  
Hardcopy version: \$169

[Click here to be among the first Patrons](#)

## Sponsor A Classroom - Dolphin Classroom Connection

By Sponsoring a Dolphin Classroom Connection, you support DCP's research, education, and conservation efforts financially, AND you bring DCP directly into a classroom of your choosing!

Anyone can Sponsor a Dolphin Classroom Connection. Have a child? Sponsor their classroom! Homeschool your kids? Sponsor your own classroom! Have a niece, grandson, neighbor who is a student or a teacher or a student teacher? Sponsor their classroom!

Want to Sponsor a Dolphin Classroom Connection, but don't know any kids or teachers? That's okay! We'll find a classroom for you!

Dolphin Classroom Connection kits come in print versions (\$500) and electronic versions (\$300). Choose what works best for your chosen classroom. Both options include a 45-minute Internet connection with a DCP scientist!

[Click here to start your sponsorship.](#)

### Print Version

- \*Welcome Letter
- \*USB drive with Educational Materials
- \*Print Dolphin Adoption Kit
- \*30 DCP Info Booklets
- \*30 DCP Trading Cards
- \*45 min. Internet Connection with a DCP Scientist

### E-Version

- \*Welcome Letter with Links to:
  - \*Educational Materials
  - \*Electronic Dolphin Adoption Kit
  - \*PDF of DCP Info Booklet
  - \*PDF Photobook
- \*45 min. Internet Connection with a DCP Scientist



# Adopt-A-Dolphin Spotlight

Adopt a  
Wild Dolphin



## Spotlight on: Kiwi



[Click here to adopt Kiwi!](#)

Kiwi, a male Atlantic spotted dolphin, has been observed by DCP since 2018. We recognize him by his wacky dorsal fin. We're on the lookout for his independence from mom, Tina (#014). Though we did not get many opportunities on the water in 2020, we did manage to see Kiwi!

We are very excited to search for Kiwi again this year.

If you would like to join us in our quest, register for our July 2021 ecotour - and search for all the Bimini Adopt-A-Wild-Dolphins!



The spotted dolphins around Bimini are ready for adoption all year round! Great gifts for little ones, even teenagers and grown-ups love seeing the images and video of each dolphin. Plus, you can feel good about making a purchase that directly helps dolphin research, education, and conservation.

Hard Copy (Print) Editions: \$35 (free shipping in USA, \$20 international shipping)

Includes printed biography, personalized certificate, 5x7 photograph, 2 randomly selected dolphin trading cards, the DCP info booklet, plus links to dolphin videos featuring your adopted dolphin and its Bimini friends!

Electronic Editions: \$30 (same price everywhere)

Includes link to 3 PDFs: the DCP info booklet, a Photobook featuring the adopt-a-dolphins, plus Adoption Kit PDF with biography, photo, personalized adoption certificate, and links to dolphin videos featuring your adopted dolphin and its Bimini friends!

Visit [www.AdoptAWildDolphin.com](http://www.AdoptAWildDolphin.com) to select your dolphin and kit edition today.



# DCP Summer Internships: Update



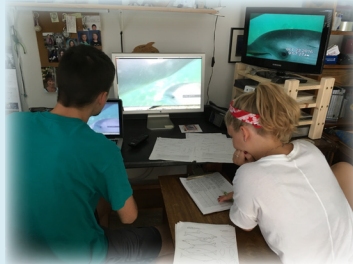
*This could be YOU!*

## DCP Summer Internships Openings:

### Please Standby!

February is typically application time for our summer field internship program. These summer positions have required components at our Florida, USA office and our Bimini, The Bahamas, field site. While we are hopeful we will be able to have summer interns in 2021, it is juuuust too soon to be sure. Therefore, we are pausing the opening of the application period and we will revisit the possibility in mid-March. In this way, we hope to be efficient with everyone's time and transparent in our goals to collect and analyze data and mentor new students – but with COVID-safety for ourselves, our students, and our communities as our top priority.

Can't wait to plan but really want an intro to DCP's research? Register for our July Bimini ecotour! See page 4 for more details.



## Nicole as Postdoc, cont'd from page 3



*Kel (L), Nicole (C), Kathleen (R)  
Rarely in the field all together, we still  
love working together!*

My plan was to transition my dissertation into peer-reviewed publications while applying for funding, ideally to continue my work with DCP. Lucky for me, this plan was fulfilled sooner than I could have hoped. In January of this year I became DCP's first postdoctoral associate, with funding and support from Dr. Mike Heithaus' lab at Florida International University (FIU). I am so grateful to have the opportunity to keep studying the dolphins of Bimini, and above all, to continue collaborating with Kathleen, Kel, and DCP, now with some additional colleagues from FIU. I have learned first-hand how volunteering can simultaneously provide support for non-profit organizations while allowing us to discover a new path in life. I've also learned that life is unexpected. I'm so glad I sent that email so long ago – who could've foreseen that it would change my entire life.

*~Nicole*



# WANDERER<sup>TM</sup> BRACELETS



## Are you a gift shop owner?

Wanderer Bracelets are available at wholesale rates for brick & mortar retailers. Just think: your store could feature these awesome dolphin bracelets!

If you are interested in selling Wanderer's dolphin bracelet, reach out to the Wanderer Bracelet team today:

<https://wandererbracelets.com/pages/wholesale>

A big, hearty  
Dolphin **THANK YOU** to  
Wanderer Bracelets as a  
DCP corporate Sponsor!

## Dolphin Bracelets from Wanderer Bracelets make great gifts!

Wanderer Bracelets are a refreshing, burden-free alternative to jewelry made from precious stones, metals or ivory.



Made from domestic water buffalo, these bracelets give new life to bones that might otherwise go to waste. Domestic water buffalo are never killed for their bones. Every Wanderer Bracelet helps preserve a unique cultural and artistic legacy for the next generation.

Wanderer Bracelets has just released a video of their dolphin bracelet and chosen to **give 10% of sales to the Dolphin Communication Project**. We are extremely grateful for their support - and the support of each and every person who purchases a dolphin bracelet!

See the video here: <https://www.facebook.com/512544298881474/posts/640433169723212>  
Visit [www.wandererbracelets.com](http://www.wandererbracelets.com) to order yours today!



*Dog not included.*



## “Not all who wander are lost...”

-Tolkien



# DCP Announcements!

## Publication Updates

Dudzinski, KM, Ribic, CA, Hill, HM, Bolton, T (2021) Evidence for Individual Differences among Adult Female Dolphins when sharing Pectoral Fin Contacts with their Calves. *Animal Behavior & Cognition*, 8(1), 52-68.

Dudzinski, KM, Ribic, CA, Hill, HM, Bolton, T (2021) Dolphin Calf Initiated Pectoral Fin Contact with Kin and Non-kin. *Animal Behavior & Cognition*, 8 (in press, due in August)

**Plus several manuscripts in revision, review or prep for publication consideration, including:**

Hill, HM, Yeater, D, Highfill, L, Bolton, T, Henriquez, W, Dudzinski, K, Gutierrez, M, Birk, D. (in review). Effects of Human-Dolphin Interactions on Tourist Knowledge, Attitudes, and Behaviors about Dolphins and Conservation. (to - *Society & Animals*)

Melillo-Sweeting, K, Maust-Mohl, M, Smukall, MJ. (in revision). Examining shark bite scars on dolphins off Bimini, The Bahamas: comparisons between bottlenose and Atlantic spotted dolphins. (to - *Marine Mammal Science*)

Danaher-Garcia, N, Connor, R, Fay, G, Melillo-Sweeting, K, Dudzinski, KM. (in prep) Using social network analysis to compare the association and interaction networks of Atlantic spotted dolphins around Bimini, The Bahamas (to - *Behavioural Processes*)

Danaher-Garcia, N, Connor, R, Fay, G, Melillo-Sweeting, K, Dudzinski, KM. (in prep) Tactile exchanges between Atlantic spotted dolphins (*Stenella frontalis*) around Bimini, The Bahamas. (to - *Behavioral Ecology and Sociobiology*)



THE DOLPHIN COMMUNICATION PROJECT CHARITABLE SOLICITATION NUMBER CH42894, MEETS ALL REQUIREMENTS SPECIFIED BY THE FLORIDA SOLICITATION OF CONTRIBUTIONS ACT. A COPY OF THE OFFICIAL REGISTRATION AND FINANCIAL INFORMATION MAY BE OBTAINED FROM THE DIVISION OF CONSUMER SERVICES BY CALLING TOLL-FREE (800-435-7352) WITHIN THE STATE OF FLORIDA, OR 850-410-3800 WHEN CALLING OUTSIDE THE STATE. REGISTRATION DOES NOT IMPLY ENDORSEMENT, APPROVAL, OR RECOMMENDATION BY THE STATE.

## In-Kind Donations: Our Wish List

**Do you have access to any of this equipment? Contact DCP to make an in-kind donation today!**  
**(Yup, in-kind donations are tax-deductible, too. Contact your accountant to learn how.)**

\* Compact HD Projector (high vis) \* Underwater still cameras \* SD flash cards \* GoPro \* Handheld GPS \* Office supplies \* Frequent flyer miles \* Laptop \* Giftcards

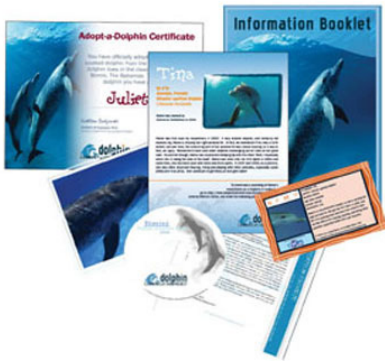


*DCP's Florida Solicitation of Contributions registration number is CH42894.*

# Adopt a Wild Dolphin

[www.adoptawilddolphin.com](http://www.adoptawilddolphin.com)

## What's in your Adoption Kit?



An official adoption certificate

Photograph or PDF photobook of your adopted dolphin

Details on how to download dolphin vocalizations from the Bimini adopt-a-dolphins as a ringtone or audio file

Link to video of the Bimini dolphins

Biography of your adopted dolphin

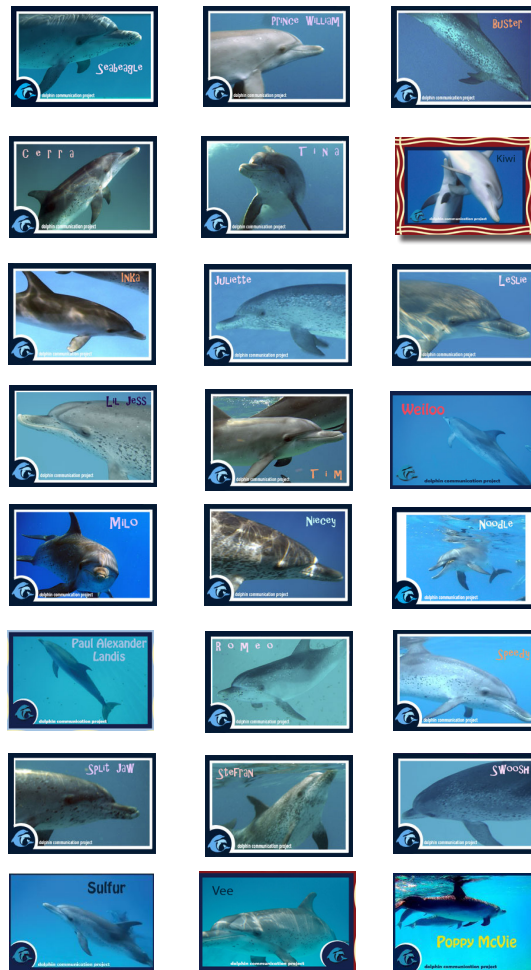
Welcome letter and registration info

Information Booklet with Atlantic spotted dolphin fact sheet and info about the Dolphin Communication Project

Dolphin trading card sample (hard copy only)

Holiday gift ideas  
[www.cafepress.com/holidaydolphin](http://www.cafepress.com/holidaydolphin)

## Dolphins currently up for adoption



## Adopting a wild dolphin with DCP helps to fund:

The purchase of new research equipment (e.g., cameras, underwater microphones)

Conservation and education programs on Bimini, in the US and around the world

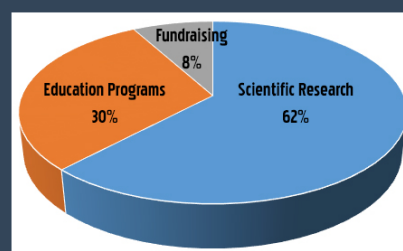
Publication and dissemination of DCP's research results to the scientific community and the general public

Maintenance of the DCP website, field reports, and our podcast The Dolphin Pod

Classroom education programs for school-aged children including DCP Youth Program, Dolphin Research Trainee, Classroom Connections

Volunteer, ecotour and internship opportunities for the public

Where does money raised from donations, dolphin adoptions and field courses go?



Adopt-a-wild-dolphin t-shirts  
[List of shops here](#)





# DCP's Adopt-a-Dolphin Program

DCP currently has ~25 dolphins from our catalog of Atlantic spotted dolphins residing around Bimini, The Bahamas available for adoption. While adoptive parents do not get to take their dolphins home, they will receive a certificate of adoption, a photo of their adopted dolphin, some facts about Atlantic spotted dolphins, information about DCP and our research around Bimini and a dolphin video. They will also receive the most recent edition of the Dolphin Gazette, DCP's quarterly newsletter, announced quarterly by eblast. Be sure to send us your email address, or subscribe online at the newsletter page!.

All dolphin adoptions through DCP help support our dolphin research throughout the world, and the creation and implementation of local, national, and international education programs for students of all ages.

Each adoption costs \$30/\$35 and lasts for one year. Become a spotted dolphin parent today & support valuable scientific research!.

**Yes! I want to adopt a dolphin!**

Some of our dolphins are listed below. For a complete list & all dolphin biographies, check out [www.adoptawilddolphin.com](http://www.adoptawilddolphin.com)

Juliette | Niecey | Paul | Swoosh | Milo | Cerra | Inka | Tina | Weiloo | Lil' Jess | Kiwi | Split Jaw | Tim | Prince William | Sulfur | Vee

I would like to adopt a dolphin: \$35 for one year. **Dolphin name:** \_\_\_\_\_  
Please cut out and mail your order form, with check, to DCP at P.O. Box 7485, Port St. Lucie, FL 34985.  
Credit card payment is available online through our web site at [www.dolphincommunicationproject.org](http://www.dolphincommunicationproject.org)

Please **SEND** my adoption package to:

If this is a gift, please note gift **GIVER** address:

Name: \_\_\_\_\_

Name: \_\_\_\_\_

Address: \_\_\_\_\_

Address: \_\_\_\_\_

City: \_\_\_\_\_ State: \_\_\_\_\_ Zip: \_\_\_\_\_

City: \_\_\_\_\_ State: \_\_\_\_\_ Zip: \_\_\_\_\_

Email: \_\_\_\_\_

Email: \_\_\_\_\_



## Postcards

\$1.00 each/ 3 for \$2



## Iruka Gear

To purchase Iruka gear visit [www.cafepress/irukagear](http://www.cafepress/irukagear)



## Notecards

\$2.50 each/ 3 for \$6



## DCP Gear

To purchase DCP gear, visit [www.cafepress/dcpgear](http://www.cafepress/dcpgear)



## Membership

### Sustaining Memberships:

Donate from \$5 to \$100/month to receive a special gift!

### Annual Memberships :

Student: \$20  
Individual: \$30  
Family: \$45  
Supporting: \$75  
Contributing: \$150  
Patron: \$500

Supporting, Contributing & Patron Members receive a DVD copy of *Dolphins - The Lighter Side*. Contributing & Patron Members also receive a photo album featuring images and information about all of our adopt-a-wild-dolphins. All gifts subject to availability and may change.

Visit [www.dolphincommunicationproject.org](http://www.dolphincommunicationproject.org) to become a member today!

Support DCP's research efforts by purchasing some of the many products that we offer for sale. All products seen here are also available on our website: [www.dolphincommunicationproject.org](http://www.dolphincommunicationproject.org) All profits from the sale of these products will directly fund DCP's research and education efforts. DCP is a nonprofit organization.



# Dolphin Anatomy Jumble

Thank you, Olivia!

Unscramble these letters to find different dolphin body parts!

preiplf

--	--	--	--	--	--	--

wolhbeol

--	--	--	--	--	--	--	--

dnmeai thocn

--	--	--	--	--	--

--	--	--	--	--

keflu

--	--	--	--	--

lemno

--	--	--	--	--

wasj

--	--	--	--

rsloda nif

--	--	--	--	--	--

--	--	--

Now, unscramble the letters from each circle and fill in the blanks to answer the following riddle:

If dolphins lived on land, which country would they live in?

\_\_\_\_\_

