



 ▶ HOLIDAY SPECIALS....2


 ▶ ONLINE EDUCATION....3


 ▶ DCP's NEW PATRON ADOPTION....5

# The Dolphin gazette

NEWSLETTER FOR THE DOLPHIN COMMUNICATION PROJECT

*The Dolphin Communication Project (DCP) is focused on the dual goals of scientific research and education. Our mission is to promote the scientific study of dolphins and inspire their conservation.*

## Happy Holidays ... stay healthy, safe & sane!

Dear Reader/DCP supporter,

Wow! We have just about 1 month left in 2020! I'm sure it is an understatement to say this year has been a challenge for all of us. I hope you will enjoy a brief respite that this issue of the *Dolphin Gazette* might provide. We have updates on more new programs and some exciting [holiday gift offers](#) (page 2) that would allow you to share the joy of DCP with your family and friends! I share my perspective on 2020 (page 8), and a bit of DCP's continuing path forward, which includes (hopefully) time in the field in 2021, on [eco-tours](#) and field courses. We also share details about several papers recently published, a [new podcast episode](#), and our webinars and field blogs. You might even have time to check out the roster of webinars (page 3) on [DCP's website](#) or our [YouTube channel](#). Thank you for your continued interest and support of our research and education programs! Here's to a safe holiday season and a very happy New Year!

Happy Reading! Cheers!

~Kathleen



## In this issue

Holiday Specials | Online Education  
| RIMS Programs | Patron Adoption  
& Sponsor A Classroom | Spotlight  
on Swoosh | New Scholarship |  
Master Program | Kathleen Reflects |  
Announcements | Coloring Page

### Mailing Address

Dolphin Communication Project  
P.O. Box 7485  
Port St. Lucie, FL 34985  
USA

FL Solicitation of Contributions  
Reg. #: CH42894 (also see page 10)

### Thank You volunteers & students!

Thank you to Nicole & Manon for their continued dedication. Thanks also to Taylor, Emil & Bill, our remote volunteers, and Amilynn, our Social Media Intern. Your contributions to our research and education programs are very valuable!

### Internships

If you are interested in interning with DCP in the field next summer, apply for an SFE or full summer internship. Please note, most other internships are office-based and do NOT include field work. Check out the web site before contacting us at [info@dcppmail.org](mailto:info@dcppmail.org).

# Holiday Shopping

## Support Dolphin Research & Education



**Special #1:** All Adopt-A-Wild-Dolphin print kit or t-shirt orders received by **1 December 2020\***, will get a choice of one free DCP Hoo-rag or 10 free, randomly selected DCP trading cards. Once DCP receives your Adoption or Shirt order, we'll reach out via email (check your spam folder!) to find out your selection.

[Click here to order an Adopt-A-Wild-Dolphin kit.](#)

[Click here to order your DCP shirts.](#)

*\*Offer good through 1 December 2020, while supplies last. Bonus offer applies to purchases made directly on DCP's website. Not good on apparel purchased through CafePress.*



**Special #2:** Print Adoption Kit + DCP-Edition Dolphin Wanderer Bracelet\*\*

For just \$49, including standard shipping<sup>d</sup>, receive an Adopt-A-Wild-Dolphin print kit and DCP-Edition Dolphin Wanderer Bracelet. Applies to selected Adopt-A-Wild-Dolphins only. The bracelets are only available directly from DCP!

[Click here to place your order.](#)

*\*\*Offer good through 5 January 2020, while supplies last.*

*<sup>d</sup>Price includes standard US (domestic) shipping. Expedited and international shipping available for an additional fee.*



**Special #3:** DCP Water Bottle\*\*

Rarely offered for sale via our website, we're excited to have reusable DCP water bottles for sale. These 16 oz, vacuum-insulated bottles are just \$29, including shipping.<sup>d</sup>

[Click here to place your order.](#)

*\*\*Offer good through 5 January 2020, while supplies last.*

*<sup>d</sup>Price includes standard US (domestic) shipping. Expedited and international shipping available for an additional fee.*

**Head to page 8 for details on:**

- **New video included with all Adopt-A-Wild-Dolphin orders**
- **Ordering deadlines for Christmas shipping**

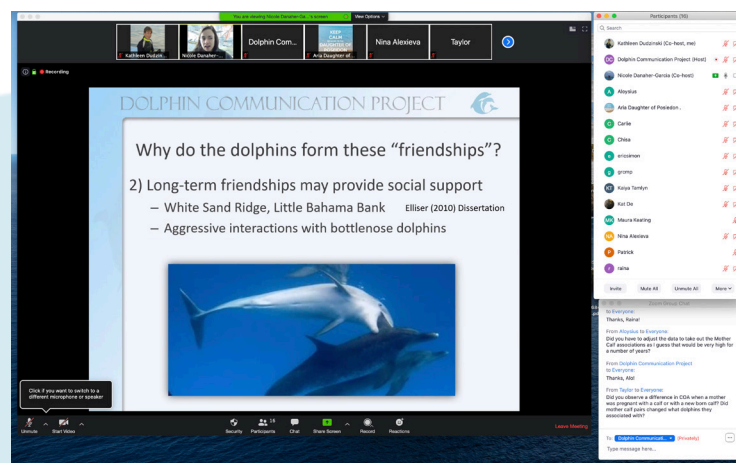
# Online Dolphin Education

*Have you gotten your dolphin fill?*

**DCP webinars** returned in September with both Dolphin Lessons & Deep Dives in the line up. A huge thank you goes to everyone who joined live and those who have enjoyed the recordings. We are very grateful for our guest speakers: Raina Fan, Nicole Danaher-Garcia, Justin Richard, Mike Heithaus, Bernd Wuersig, Valeria Paz, and Sunna Edberg, among others. We look forward to our final programs of the year including a Deep Dive into Contaminants & Marine Mammals with Annalisa Zaccaroni. Check out these links for all our webinar recordings:

[Webinars on DCP Website](#)

[Webinars on DCP's YouTube Channel](#) (subscribe now!)

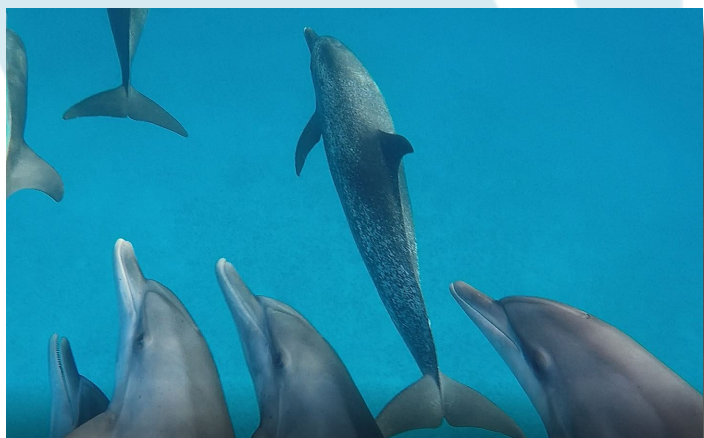


*A frame from Nicole Danaher-Garcia's Deep Dive Webinar from April 2020.*

**The Dolphin Pod** also had a new episode released in September. This episode celebrates 20 years of DCP with an at times silly interview with Kathleen & Kel. [Click here to have a listen](#) directly on DCP's website, or find *The Dolphin Pod* wherever you get your podcasts.

**Kids Science Activities** continue to be accessible on our website - [just click here](#). From interactive activities for elementary school students to word searches, jumbles, and coloring sheets, there is something for everyone.

Check Page 5 in this issue of the *Gazette* for news on [Sponsoring A Classroom](#).



*Atlantic spotted dolphins feature in many DCP webinars & Dolphin Pod episodes - but so do many other species!*

**THE  
DOLPHIN  
POD**



# RIMS Program Updates

*Resuming DCP's studies of the dolphins on Roatan in 2021!*

## DCP's 20th Anniversary "2nd year" - Eco-tours to Roatan!

**Join Kathleen on Roatan at Antony's Key Resort (AKR):**

**January, May & October 2021**



DCP will return to Roatan in 2021, at least three times, to collect data with eco-tour participants.

This assumes that COVID-19 will not have severely impacted our ability to travel internationally!

(Stay Tuned to the website for updates.)

We are coordinating for week-long programs in January (9-16 Jan 2021 - space is limited), May (1-8 May 2021) and October (8-15 Oct. 2021). As always, spaces are filled on a first-come, first-served basis.



Updates will be available in the next issue of the *Dolphin Gazette* and in a field blog post to the DCP home page, as well as to the DCP RIMS eco-tour page. You can also contact DCP by email for more information.

Check out the [RIMS Eco-tour page](#) (look under the Education tab) to learn more about logistics and other details. Or send DCP an inquiry by email ([info@dcpmail.org](mailto:info@dcpmail.org)).

**[www.dolphincommunicationproject.org](http://www.dolphincommunicationproject.org)**



# New Options to Support DCP!

*We are proud to offer new ways to support our mission - and spread dolphin joy!*

## Patron Adopt-A-Dolphin

DCP's Patron Adopt-A-Wild-Dolphin program allows you the opportunity to adopt one of four specific dolphins from our Bimini, The Bahamas, field site to have an even greater impact on DCP's mission. The extra money raised from these kits will be funneled directly into DCP's Bimini field site research and related education programs. As a thank you for purchasing a Patron kit, DCP streamlined the kit design to make the details more concise and access more direct to our adoption content, including several video/audio files as electronic links online (or available on USB drive for the print version of this Patron Adoption Kit). Choose from Tina, Prince William, Vee, and Paul - four long-time residents of the warm turquoise waters near Bimini!



Patron Adoption kits:  
Electronic version: \$135  
Hardcopy version: \$169

[Click here to be among the first Patrons](#)

## Sponsor A Classroom - Dolphin Classroom Connection

By Sponsoring a Dolphin Classroom Connection, you support DCP's research, education, and conservation efforts financially, AND you bring DCP directly into a classroom of your choosing!

Anyone can Sponsor a Dolphin Classroom Connection. Have a child? Sponsor their classroom! Homeschool your kids? Sponsor your own classroom! Have a niece, grandson, neighbor who is a student or a teacher or a student teacher? Sponsor their classroom!

Want to Sponsor a Dolphin Classroom Connection, but don't know any kids or teachers? That's okay! We'll find a classroom for you!

Dolphin Classroom Connection kits come in print versions (\$500) and electronic versions (\$300). Choose what works best for your chosen classroom. Both options include a 45-minute Internet connection with a DCP scientist!

[Click here to start your sponsorship.](#)

### Print Version

- \*Welcome Letter
- \*USB drive with Educational Materials
- \*Print Dolphin Adoption Kit
- \*30 DCP Info Booklets
- \*30 DCP Trading Cards
- \*45 min. Internet Connection with a DCP Scientist

### E-Version

- \*Welcome Letter with Links to:
  - \*Educational Materials
  - \*Electronic Dolphin Adoption Kit
  - \*PDF of DCP Info Booklet
  - \*PDF Photobook
- \*45 min. Internet Connection with a DCP Scientist



## Spotlight on: Swoosh



[Click here to adopt Swoosh!](#)



Swoosh (#36) is an adult, female Atlantic spotted dolphin. DCP has been observing her off the coast of Bimini, The Bahamas, since 2001, when she was a young juvenile. Recognized by a NIKE-like “swoosh” on her dorsal fin, she is frequently seen with other females, including Lil’ Jess (#35). Swoosh is a very outgoing, fun-loving dolphin who likes to get up close and personal with whomever is near! Swoosh is just as fast as her name suggests!



She’s also a mom - and we love seeing her with her little ones in tow.

Swoosh is one of six dolphins available in DCP’s limited-time Adoption + Bracelet bundle. [Click here to get yours today.](#) Or, [click here for a standalone adoption kit](#) of Swoosh.

The spotted dolphins around Bimini are ready for adoption all year round! Great gifts for little ones, even teenagers and grown-ups love seeing the images and video of each dolphin. Plus, you can feel good about making a purchase that directly helps dolphin research, education, and conservation.

Hard Copy (Print) Editions: \$35 (free shipping in USA, \$20 international shipping)

Includes printed biography, personalized certificate, 5x7 photograph, 2 randomly selected dolphin trading cards, the DCP info booklet, plus links to dolphin videos featuring your adopted dolphin and its Bimini friends!

Electronic Editions: \$30 (same price everywhere)

Includes link to 3 PDFs: the DCP info booklet, a Photobook featuring the adopt-a-dolphins, plus Adoption Kit PDF with biography, photo, personalized adoption certificate, and links to dolphin videos featuring your adopted dolphin and its Bimini friends!

Visit [www.AdoptAWildDolphin.com](http://www.AdoptAWildDolphin.com) to select your dolphin and kit edition today.

# Janet Hothow DCP Summer Internship Scholarship



*Janet Hothow - longtime dolphin lover!*

In 1992, Janet Hothow joined Kathleen on a research trip in The Bahamas, when Kathleen was collecting data for her PhD. The experience had a profound impact on Janet; 28 years later, she was still sharing her stories with friends and never lost track of her scrapbook memorializing the adventure.

Sadly, in August this year, Janet passed away after a battle with cancer. Her dear friend Maureen reached out to Kathleen and DCP in Janet's final days. Kathleen was able to pass along messages of gratitude and updates on DCP's work from 1992 through to the present day.

Janet's estate has now established the *Janet Hothow DCP Summer Internship Scholarship*, which will first be given in 2021. The intent of this scholarship will be to offset fieldwork costs for a summer intern(s).

Details will be provided in early 2021, when the DCP summer internship application period opens. Stay tuned to the DCP website - internships page.

DCP is honored to be a part of Janet's memory in this way. And, we thank Maureen for giving Janet's scrapbook to DCP. We know this scholarship in Janet's honor will help young, aspiring intern scientists and further dolphin research and conservation.

## Master Program on Large Marine Vertebrates

This first level Master in Large Marine Vertebrate Sciences is an International program, held in English, specifically designed to give professionals and young graduates theoretical knowledge on a large variety of aspects of large marine vertebrate management and conservation, starting from the basics (physiology, biology, anatomy, etc.) and including more specific topics, like welfare, diseases and pathology, legislation concerning marine vertebrates, monitoring, management in the wild and under human care, as well as communication and scientific writing skills.

The special strength of this Master Course is its practical approach, allowing the participants to get in contact with/to immerse into the current work of different entities involved in the study and management of large marine vertebrates, both in the wild and under human care, with a 20 CFU (500 hours) internship and with a mandatory, immersive field research trip with the Dolphin Communication Project (DCP) to the DCP Director's research field site on Roatan, Honduras.



For more information on this 18-month program (including pre-requisites and cost), please visit the [Master description page](#) and/or the [Master web page](#).

# Twenty Years, and counting ...

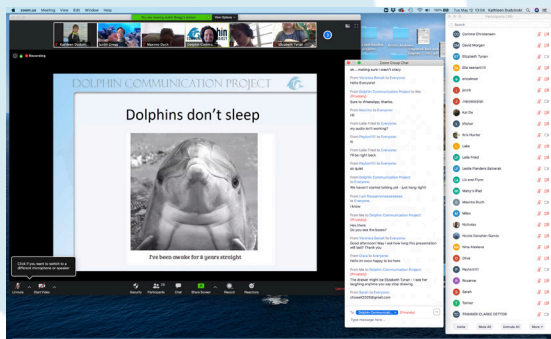
## New Perspective(s) in a Year of Challenge!

*Submitted by Kathleen Dudzinski, PhD*

This year, 2020, has been absolutely amazing! It was NOTHING that I (or our team at DCP) planned. Before the pandemic initiated global lock-downs, I was able to conduct two research trips (Janaury, March) to Roatan at RIMS/AKR to collect nearly a dozen hours of video with stereo audio data of their bottlenose dolphins. That said, our summer field season from Bimini, The Bahamas, was nearly non-existent. Kel had only 4 boat trips! Our spring/summer field courses and summer/fall eco-tours to both Roatan and Bimini were postponed or cancelled outright. Life as we knew it ground to a halt, which was true of just about everyone and anyone with whom we communicated. At heart, Kel and I are field biologists and as a field biologist one must be prepared for the unexpected. We always try to have a plan B, or a plan C. Still, before March 2020, who would've thunk one of those plans should need to be "in the event of a global pandemic"?!



Still, our training came in handy and we launched DCP's two-tiered webinar series that includes Deep Dives and Dolphin Lessons. We initiated our first ever "remote intern" program, which included our first ever social-media interns! (Thank you to Taylor, Raina, Emil, Bill, Olivia, and Amilynn for your hard work and effort for DCP!) And, though we did not collect much data over the last 6-8 months, we did get a lot of data processed! Nearly all of our videologs have one or two passes completed for our RIMS data. Our Bimini video logs and photo-ID data are almost caught up to current! (Did I mention there is about 20 hours of analysis time for every hour of data collected?!) As such, 2020 could be viewed as a very productive year so far for DCP in that not only did we make a dent in analyses, but we also got several scientific papers finished, submitted, accepted, published, and/or in review or just about to go into review/submission.



*A screen grab from a Dolphin Lesson webinar ("Fantatical Facts") in May 2020.*

DCP's mission is to promote the scientific study of dolphins and inspire their conservation. We embody our mission with our field courses, our eco-tours, and our data collection protocols. But, that is only part of the way we inspire conservation. We also need to share (disseminate) our findings to a wider audience. Thus, 2020 has been a year that has allowed us to delve more thoroughly into the typical paths for dissemination - through scientific papers and our newsletter, but also in several new programs.

*Continued on page 10 ...*

## Adoption Video & Shipping Announcements, continued from page 2

### New Video Included with all Adopt-A-Wild-Dolphin Orders!

Because 2020 did not include much boat time off Bimini, each adopt-a-dolphin is not featured in our annual adoption video.

But, we were able to collect juuuust enough video to create a fun new adoption video for our supporters!

### Christmas Ordering Deadlines

**18 Dec: Standard shipping**

**21 Dec: Express shipping**

**23 Dec: to receive a jpg of certificate for the holiday**

# Bimini Ecotour July 2021



*This could be YOU!*

**Sunday 11 July -  
Friday 16 July 2021**

Oh, how we miss having guests at our Bimini, The Bahamas, field site! We are hopeful that summer 2021 will bring confidence in traveling safely. If it does - we hope you'll join us!

### ***What is a Bimini ecotour with DCP like?***

Programs are 5-nights, but **we encourage guests to add a 6th night and arrive on 10 July**. This will help ensure you don't miss anything on Sunday 11th. Guests stay at the small, locally-owned and operated Sea Crest Hotel & Marina. Each morning, there is an optional DCP-led activity: presentation, round table discussion or beach clean-up - or free time to explore

Bimini's reefs, mangroves or beaches. Each afternoon, we head out with the local boat operator with the most experience taking folks to see the wild dolphins of Bimini.

### ***What else is included?***

The package includes all meals, beginning with lunch on Sunday and ends after breakfast on Friday. With tasty snacks on each boat trip, bellies will be happy! Rental snorkel gear is included, though we recommend folks bring their own to ensure the best fit. All of your Bahamian taxes are included, too!

### ***What is not included?***

Transportation to Bimini, gratuity for hotel staff & boat crew, additional drinks, snacks & gifts

### ***Why choose this as my vacation?***

DCP participants get all the fun of a swim-with-wild-dolphins vacation, but they learn much more and their participation gets DCP much (much!) needed boat time to collect data on these amazing creatures. Win-Win!

## **Special U.S. Tax Deduction**

Donate now to utilize the 2020 one-time \$300 charitable donation deduction authorized by the CARES Act (talk to your tax professional for details).

[Click here to make a one-time or monthly donation.](#)

Thank you!!

# Name-A-Dolphin: Coming Soon!

Just once or twice a year, someone has the chance to name a dolphin from our Bimini, The Bahamas field site!

Each dolphin can only be named once, so this exclusive opportunity is \$1,000. You receive the first ever print adoption kit for “your” dolphin along with other goodies including a Name-A-Dolphin certificate, a copy of *Dolphin Mysteries* or *Are Dolphins Really Smart* and a shirt, mug or tote bag with your dolphins’ image!

Once “your” dolphin is named, it joins DCP’s Adopt-A-Wild-Dolphin roster and the general public can adopt “your” dolphin for just \$30 or \$35!

Stayed tuned for details on this year’s nominee.  
Or, email DCP if you are ready to scoop it up!  
[info@dcpmail.org](mailto:info@dcpmail.org)



*Will you name me?*

## Twenty Years, and counting ... cont'd from page 8

These new programs include our webinars and our online educational content. And, we’re not done there. We’ve recently launched some exciting new ways for our supporters to help fund our research and educational programs; for example, we have a new Patron level adopt-a-dolphin program (page 5) and a new Sponsor-a-Classroom program (also page 5). And, we are already planning for our 2021 Eco-tours (Bimini, page 9; RIMS, page 4, for details). So, through our research, education, and conservation programs, we recognize and honor our history and how we got to where we are now. But, we are also looking forward to how we can not only continue but expand on our programs and share our findings. For this reason, we plan to continue celebrating the two decades of DCP’s history into and throughout 2021. I hope you’ll join us - if not in the field to Bimini or Roatan as part of one of our eco-tours, then online with our webinars, field blogs, and various papers, podcasts, and stories.



As ever, thank you very much for your support! It means the difference in what and how much we are able to do each and every day!

*~Kathleen*

*Kathleen collecting data while Calli watches her ...  
maybe taking notes on Kathleen’s behavior?*



# WANDERER<sup>TM</sup> BRACELETS



## Are you a gift shop owner?

Wanderer Bracelets are available at wholesale rates for brick & mortar retailers. Just think: your store could feature these awesome dolphin bracelets!

If you are interested in selling Wanderer's dolphin bracelet, reach out to the Wanderer Bracelet team today:

<https://wandererbracelets.com/pages/wholesale>

A big, hearty  
Dolphin **THANK YOU** to  
Wanderer Bracelets as a  
DCP corporate Sponsor!

## Dolphin Bracelets from Wanderer Bracelets make great gifts!

Wanderer Bracelets are a refreshing, burden-free alternative to jewelry made from precious stones, metals or ivory.



Made from domestic water buffalo, these bracelets give new life to bones that might otherwise go to waste. Domestic water buffalo are never killed for their bones. Every Wanderer Bracelet helps preserve a unique cultural and artistic legacy for the next generation.

Wanderer Bracelets has just released a video of their dolphin bracelet and chosen to **give 10% of sales to the Dolphin Communication Project**. We are extremely grateful for their support - and the support of each and every person who purchases a dolphin bracelet!

See the video here: <https://www.facebook.com/512544298881474/posts/640433169723212>  
Visit [www.wandererbracelets.com](http://www.wandererbracelets.com) to order yours today!



  
10% OF ALL SALES  
ARE DONATED TO  
**Save Dolphins**

IN PARTNERSHIP WITH  


*Dog not included.*

## “Not all who wander are lost...”

-Tolkien

# DCP Announcements!

## Publication Updates

Themelin, M, Ribic, CA, Melillo-Sweeting, K, Dudzinski, KM (2020) New approach for relationship quality study in dolphins. *Behavioural Processes*. 181, 104260. <https://doi.org/10.1016/j.beproc.2020.104260>

Dunn, C, Claridge, D, Herzing, D, Volker, C, Melillo-Sweeting, K, Wells, R, Turner, T, Sullivan, K. (2020) Satellite-linked telemetry study of a rehabilitated and released Atlantic spotted dolphin (*Stenella frontalis*) in The Bahamas provides insights into broader ranging patterns and conservation needs. *Aquatic Mammals*. 46(6), 633-639, DOI 10.1578/AM.46.6.2020.633

Dudzinski, KM, Ribic, CA, Hill, HM, Bolton, T (in press) Evidence for Individual Differences among Adult Female Dolphins when sharing Pectoral Fin Contacts with their Calves. *Animal Behavior & Cognition*. (will be available in winter 2021)

**Plus several manuscripts in revision, review or prep for publication consideration, including:**

Dudzinski, KM, Ribic, CA, Hill, HM, Bolton, T (in review) Dolphin Calf Initiated Pectoral Fin Contact with Kin and Non-kin. (to – *Animal Behavior & Cognition*).

Danaher-Garcia, N, Connor R, Fay, G, Melillo-Sweeting, K, Dudzinski, KM. (in prep) Using social network analysis to compare the association and interaction networks of Atlantic spotted dolphins around Bimini, The Bahamas (to - *Behavioural Processes*)



THE DOLPHIN COMMUNICATION PROJECT CHARITABLE SOLICITATION NUMBER CH42894, MEETS ALL REQUIREMENTS SPECIFIED BY THE FLORIDA SOLICITATION OF CONTRIBUTIONS ACT. A COPY OF THE OFFICIAL REGISTRATION AND FINANCIAL INFORMATION MAY BE OBTAINED FROM THE DIVISION OF CONSUMER SERVICES BY CALLING TOLL-FREE (800-435-7352) WITHIN THE STATE OF FLORIDA, OR 850-410-3800 WHEN CALLING OUTSIDE THE STATE. REGISTRATION DOES NOT IMPLY ENDORSEMENT, APPROVAL, OR RECOMMENDATION BY THE STATE.

## In-Kind Donations: Our Wish List

**Do you have access to any of this equipment? Contact DCP to make an in-kind donation today!**  
**(Yup, in-kind donations are tax-deductible, too. Contact your account to learn how.)**

\* Compact HD Projector (high vis) \* Underwater still cameras \* SD flash cards \* GoPro \* Handheld GPS \* Office supplies \* Frequent flyer miles \* Laptop \* Giftcards

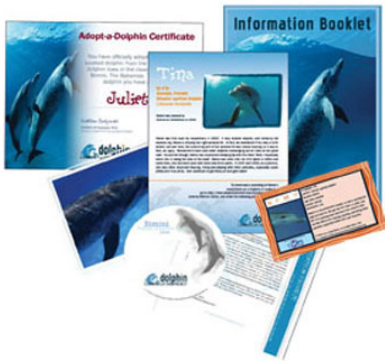


*DCP's Florida Solicitation of Contributions registration number is CH42894.*

# Adopt a Wild Dolphin

[www.adoptawilddolphin.com](http://www.adoptawilddolphin.com)

## What's in your Adoption Kit?



An official adoption certificate

Photograph or PDF photobook of your adopted dolphin

Details on how to download dolphin vocalizations from the Bimini adopt-a-dolphins as a ringtone or audio file

Link to video of the Bimini dolphins

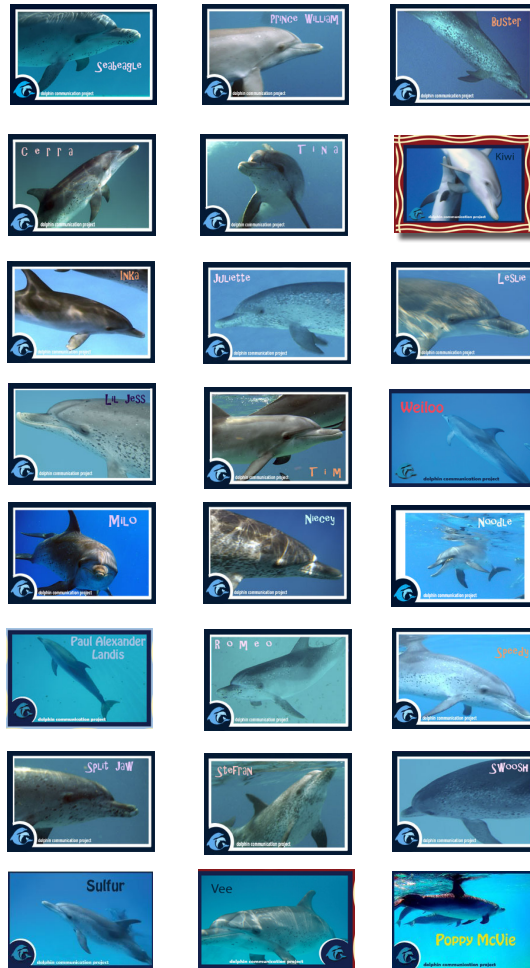
Biography of your adopted dolphin

Welcome letter and registration info

Information Booklet with Atlantic spotted dolphin fact sheet and info about the Dolphin Communication Project

Dolphin trading card sample (hard copy only)

## Dolphins currently up for adoption



## Adopting a wild dolphin with DCP helps to fund:

The purchase of new research equipment (e.g., cameras, underwater microphones)

Conservation and education programs on Bimini, in the US and around the world

Publication and dissemination of DCP's research results to the scientific community and the general public

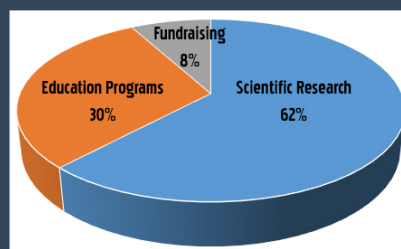
Maintenance of the DCP website, field reports, and our podcast The Dolphin Pod

Classroom education programs for school-aged children including DCP Youth Program, Dolphin Research Trainee, Classroom Connections

Volunteer, ecotour and internship opportunities for the public

Holiday gift ideas  
[www.cafepress.com/holidaydolphin](http://www.cafepress.com/holidaydolphin)

Where does money raised from donations, dolphin adoptions and field courses go?



Adopt-a-wild-dolphin t-shirts  
[tinyurl.com/y1fx44v](http://tinyurl.com/y1fx44v)



# DCP's Adopt-a-Dolphin Program

DCP currently has ~25 dolphins from our catalog of Atlantic spotted dolphins residing around Bimini, The Bahamas available for adoption. While adoptive parents do not get to take their dolphins home, they will receive a certificate of adoption, a photo of their adopted dolphin, some facts about Atlantic spotted dolphins, information about DCP and our research around Bimini and a dolphin video. They will also receive the most recent edition of the Dolphin Gazette, DCP's quarterly newsletter, announced quarterly by eblast. Be sure to send us your email address, or subscribe online at the newsletter page!.

All dolphin adoptions through DCP help support our dolphin research throughout the world, and the creation and implementation of local, national, and international education programs for students of all ages.

Each adoption costs \$30 and lasts for one year. Become a spotted dolphin parent today & support valuable scientific research!.

**Yes! I want to adopt a dolphin!** Some of our dolphins are listed below. For a complete list & all dolphin biographies, check out [www.adoptawilddolphin.com](http://www.adoptawilddolphin.com)  
 Juliette | Niecey | Paul | Swoosh | Milo | Cerra | Inka | Tina | Weiloo | Lil' Jess | Kiwi | Split Jaw | Tim | Prince William | Sulfur | Vee

I would like to adopt a dolphin: \$35 for one year. **Dolphin name:** \_\_\_\_\_  
 Please cut out and mail your order form, with check, to DCP at P.O. Box 7485, Port St. Lucie, FL 34985.  
 Credit card payment is available online through our web site at [www.dolphincommunicationproject.org](http://www.dolphincommunicationproject.org)

Please **SEND** my adoption package to: \_\_\_\_\_ If this is a gift, please note gift **GIVER** address: \_\_\_\_\_  
 Name: \_\_\_\_\_ Name: \_\_\_\_\_  
 Address: \_\_\_\_\_ Address: \_\_\_\_\_  
 \_\_\_\_\_  
 \_\_\_\_\_  
 City: \_\_\_\_\_ State: \_\_\_\_\_ Zip: \_\_\_\_\_ City: \_\_\_\_\_ State: \_\_\_\_\_ Zip: \_\_\_\_\_  
 Email: \_\_\_\_\_ Email: \_\_\_\_\_



## Postcards

\$1.00 each/ 3 for \$2



## Iruka Gear

To purchase Iruka gear visit [www.cafepress/irukagear](http://www.cafepress/irukagear)



## Notecards

\$2.50 each/ 3 for \$6



## DCP Gear

To purchase DCP gear, visit [www.cafepress/dcpgear](http://www.cafepress/dcpgear)



## Membership

### Sustaining Memberships:

Donate from \$5 to \$100/month to receive a special gift!

### Annual Memberships :

- Student: \$20
- Individual: \$30
- Family: \$45
- Supporting: \$75
- Contributing: \$150
- Patron: \$500

Supporting, Contributing & Patron Members receive a DVD copy of *Dolphins - The Lighter Side*. Contributing & Patron Members also receive a photo album featuring images and information about all of our adopt-a-wild-dolphins. All gifts subject to availability and may change.

Visit [www.dolphincommunicationproject.org](http://www.dolphincommunicationproject.org) to become a member today!

Support DCP's research efforts buy purchasing some of the many products that we offer for sale. All products seen here are also available on our website: [www.dolphincommunicationproject.org](http://www.dolphincommunicationproject.org) All profits from the sale of these products will directly fund DCP's research and education efforts. DCP is a nonprofit organization.



# Celebrate Winter Holidays

*Thank you for another beautiful coloring page, Ranke!*

