


 ► COVID IMPACTS....4


 ► DCP HISTORY....7


 ► THROWBACK PUZZLE....14

The Dolphin gazette

NEWSLETTER FOR THE DOLPHIN COMMUNICATION PROJECT

The Dolphin Communication Project (DCP) is focused on the dual goals of scientific research and education. Our mission is to promote the scientific study of dolphins and inspire their conservation.

Finding A “New Normal”

As I read over this issue of the *Dolphin Gazette*, it is clear that life is not normal. And, I’m sure that’s the same for everyone reading this. I’m not sure I want to consider whether we “go back” to normal or we find a “new normal.” I’m more inclined to believe we respond and move forward, and you’ll see that is exactly what DCP has done given these challenging times (page 4)! We completely regrouped on all of our planned programs for this spring and summer - our eco-tours, field courses, even our interns. But, I 100% believe that we have rallied and will come out stronger for these “recalibrations.” (Don’t get me wrong! I very much look forward to getting back into the field, observing dolphins, and collecting data, but for now we focus on the analyses.) We have lots of interesting details in this issue of the gazette - from our webinars and science activities to a bit more on DCP’s history. Afterall, this is still our 20th anniversary year! So, grab a lemonade and a comfy chair, and enjoy this issue of the *Gazette*! Happy Reading!

Cheers!

~Kathleen



In this issue

Ecotour Updates | DCP COVID-19 Impacts | DCP History in Brief | Webinars | Kid Science Activities | The Dolphin Pod | Announcements | Word Search

Mailing Address

Dolphin Communication Project
P.O. Box 7485
Port St. Lucie, FL 34985
USA

FL Solicitation of Contributions
Reg. #: CH42894 (also see page 10)

Thank You volunteers & students!

Thank you to Nicole (Ph.D. student) & Skylar Muller (M.S.) for their dedication. Welcome to Taylor & Raina, our remote interns, Olivia, our remote volunteer, and Amilynn, our Social Media Intern. Your contributions to our research and education programs are very valuable!

Internships

If you are interested in interning with DCP in the field next summer, apply for an SFE or full summer internship. Please note, most other internships are office-based and do NOT include field work. Check out the web site before contacting us at info@dcppmail.org.

Bimini, The Bahamas

Hopeful for an August 9 -14, 2020 program



Join Kel for the Vacation-y Option

New Dates: August 9 - 14, 2020

\$1999 gets you 5 nights' accommodation (double occupancy; single available for a fee), 5 boat trips (weather dependent), Breakfast, Lunch, & Dinner (adjusted on arrival & departure days), Drinking water & snacks during boat trips, Rental snorkel gear, DCP talks, Bahamian tax (12% VAT)

Oh - and, you know, Wild Dolphins!!

Deposits are still required to hold your space, however we are being as flexible as possible in our refund policy. While we remain hopeful for this August 2020 program, we will follow guidance from The Bahamas generally, and Bimini specifically, and make final decisions based on the best science and ethics possible.

[Click here for more info](#)

May 2020 Field Course Postponed

2021 Dates TBD

Our program with Sacred Heart University has been postponed until May/June 2021. Stay tuned for details and reach out if you are interested in registering!



Opportunity to Join Kathleen

Eco-tour program in 2020!

DCP's 20th Anniversary year - October eco-tour to RIMS!!

Join Kathleen on Roatan at Antony's Key Resort (AKR): 3-10 October 2020



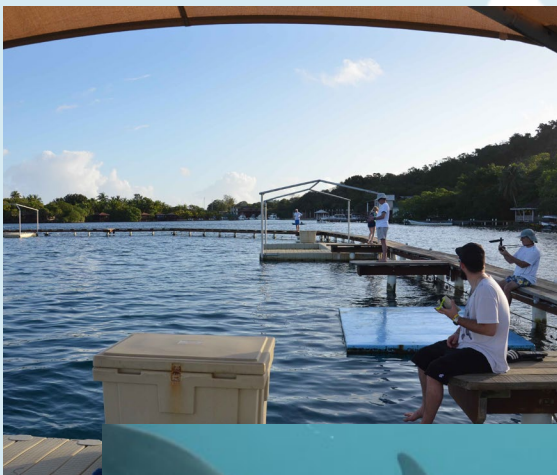
DCP returns to Roatan to collect data with eco-tour participants again in 2020! We have our annual fall program (3 - 10 October 2020). As always, spaces are filled on a first-come, first-served basis. There is only one space remaining!

Check out the [RIMS Eco-tour page](https://www.dolphincommunicationproject.org/rims-eco-tour) (look under the Education tab) to learn more about logistics and other details. Or send DCP an inquiry by email (info@dcpmail.org).



www.dolphincommunicationproject.org

FYI - as of late May, DCP confirmed that Roatan has been COVID-free. The folks at AKR let us know they are expanding their disinfectant protocols and look forward to welcoming guests back to the island and to the resort.



COVID-19 Impacts on DCP Programs

Submitted by Dr. Kathleen Dudzinski

To say that life and work have been surreal, challenging, fully disrupted, for EVERYONE, would be a wild understatement. And, I mean that globally! Since mid-March, I've shared correspondence with friends and colleagues across the globe - from the US to Europe to Asia to Africa and Australia. Literally, every continent except Antarctica. And we are all in the same situation - staying at home to protect ourselves and our loved ones as well as trying to lessen our potential impact on people in our communities.

So, before I go further in this impact update, on behalf of DCP, I hope everyone is healthy and safe, and staying as sane as possible as we all traverse the current global pandemic.

And, though everyone has been thrown for a loop, I'm pleased that by-and-large, folks have rallied. We are resilient, resourceful, and ready to exercise our flexibility in response! (How's that for alliteration!) And, that's what we did, here at DCP!

Our first "hit" was a postponement of all of DCP's spring college-level field courses - both to Bimini and to Roatan (RIMS at AKR). Given that most States in the U.S. required stay-at-home rules for 6-8 weeks this spring and students were not on campus but learning to navigate their course loads remotely, the schools with which we partner also cancelled or delayed all their study abroad programs. Thankfully, the schools (their professors and students) have postponed, not outright cancelled, their 2020 DCP field courses to 2021. So, next year looks to potentially be one filled with students in the field with DCP, from up to 8 universities! Our fingers are crossed as we look forward to sharing our research and results, as well as our protocols, with these students ... and maybe exciting the next generation of scientists with these immersive, hands' on experiences! Of course, we'd be lying if we did not also add that we look forward to introducing each of these students to the dolphins we study!

The next set of delays were to our eco-tour programs. The extra eco-tour to RIMS in May was postponed to potentially January 2021. Roatan was still closed to tourism as of early May. I spoke with Teri a few times this spring (check out our [RIMS webinar from May 5th ... on DCP's YouTube Channel](#) or the [webinar page](#) of www.dolphincommunicationproject.org, under the Education tab, as well as page 6 in this newsletter for an update on DCP's new webinars.). Teri shared that due to the stringent rules put in place on Roatan, they likely have avoided having COVID on the island, and as of mid-May there have been no reported cases on Roatan. I, for one, am very much looking forward to the DCP October eco-tour to RIMS and AKR on Roatan. Our dates are 3-10 October and there is one space remaining for anyone interested in joining us!

Our Bimini eco-tour that was scheduled for June has been tentatively shifted to August, though we are waiting word for when The Bahamas might begin opening up to receive tourists. The lock-down measures that folks on Bimini and in Nassau have experienced were definitely more strident than what we were issued in Florida. That said, we do know that the dolphins at Blue Lagoon Island home of Dolphin Encounters are doing well. And, Kel has had some distant observations of the dolphins off Bimini from her beach vantage. I am fairly certain that Kel is "itching" to get out on (and in) the water to start the 2020 research season!

When the stay-at-home announcements were made, DCP had already accepted two candidates for our annual summer internship. Taylor had interned with DCP in 2019 and was coming back while Raina was relatively new to DCP, though she'd joined Taylor in October 2019 on the DCP eco-tour to RIMS. Just as we accepted them, we had to put everything on hold. Frustrating! But, happening everywhere. Finally, we realized it was not likely that Raina and Taylor would be able to spend time in Florida or on Bimini this summer. Kel and I were able to pull together details to launch DCP's first ever Remote Internship! Thankfully, Taylor and Raina were game to help DCP remotely with data analyses. And, as we are ~2 weeks in, they seem to be doing well. We'll hear from them in the next issue of the Gazette ... stay tuned.

...continued on next page...

continued ...COVID-19 Impacts

Manon, DCP's intern and MS student from France last year, is helping me train and supervise Raina and Taylor as they work on video analysis for our relationship quality study (see the citation for our in review methods manuscript with Manon as lead author, on page 11). In addition to Raina and Taylor, DCP has welcomed two other remote intern/volunteers:

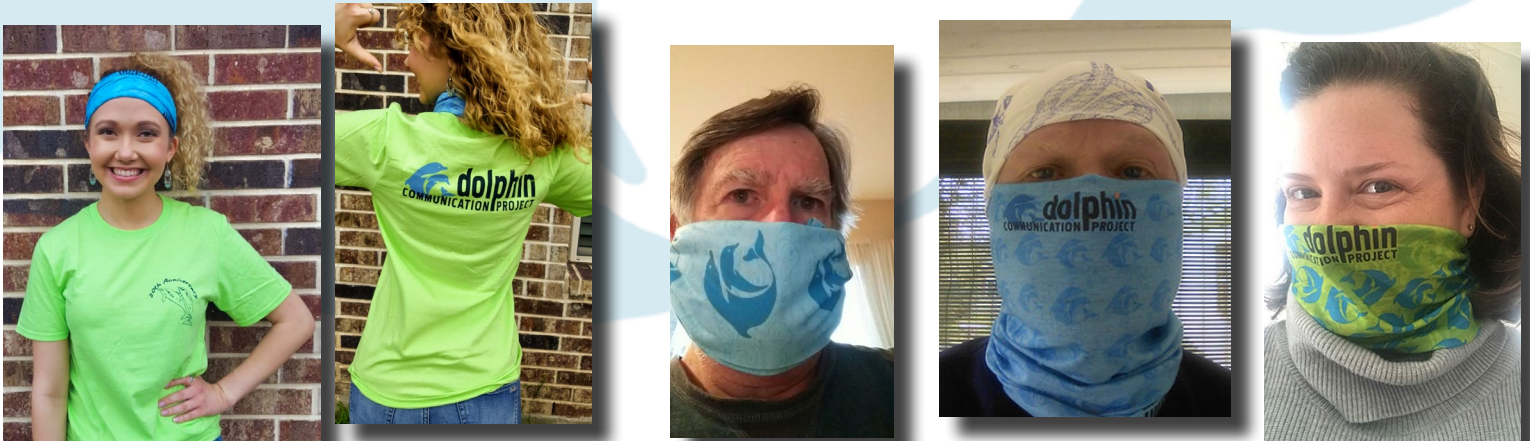
Amilynn, from St. Mary's University, is helping DCP with our social media content and programs. You can see Amilynn modeling her DCP swag below. Amilynn has already provided DCP with some neat ideas for expanding our social media marketing and announcements, as well as for getting the word out about DCP's research and education programs to a wider audience. Thank you, Amilynn!

Our newest remote volunteer is Olivia from Eckerd University. Olivia is just starting her collaboration with DCP and will help us develop more fun and educational Kids Science Activities (see page 6, or our website under the Education tab). Olivia will also be assisting Kel and DCP with analyses of some of the Bimini dolphin data. Welcome, Olivia!

The fun does not stop there! Remember ... I mentioned our flexibility in response and we have more to share! DCP also decided to respond to the restrictions imposed by COVID with some exciting new programming. On April 2, we launched our webinar series! We offer two types of webinars: DCP Dives Deep into ... and DCP Dolphin Lessons. Dolphin Lessons are geared toward the younger audience (~6-13 yrs) while the Deep Dives are more for older students and adults. We've been giving two webinars a week and we are still going strong! We've had several of DCP's collaborators share their research with our listeners as well, Check out [DCP's YouTube channel](#) and be sure to subscribe. Or, visit the [DCP website](#) - under the Education Tab you will see a webinar page ... all of our recorded webinars are listed, along with the upcoming schedule. If you have an idea for a future DCP webinar, let us know. If it's possible, we'll try to schedule it.

And, lastly, as you might remember, since 2020 is DCP's 20th anniversary year, we've pulled together some various "swag" items to celebrate with our supporters including students. Because we won't get to share our celebrations in person with folks in 2020, we've made some of these items available from the DCP website. You can find the [20th anniversary shirts](#) (with the original DCP logo and our current logo) as well as our [Hoo-rags and half-hoos](#). And, as you can see below, the DCP Hoo-rags and half-hoos make great and stylish masks!!

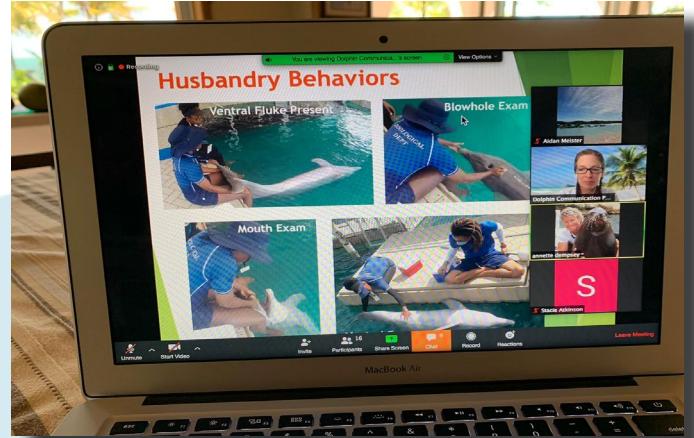
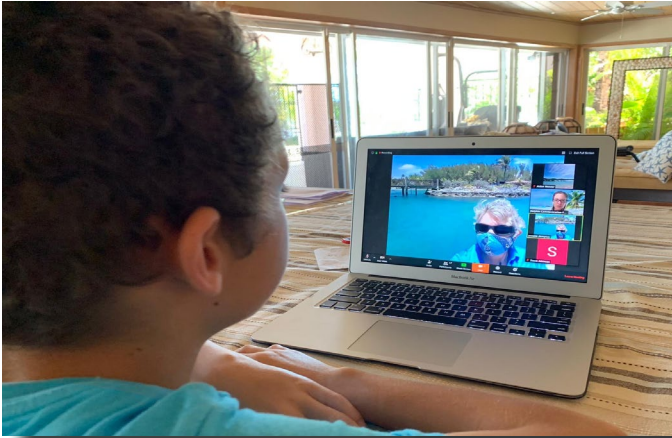
We hope you all continue to stay healthy, safe, and sane in these challenging and uncertain times! Cheers!!



Amilynn models her DCP swag!

Bill, Ron, & Jillian model their DCP swag style!

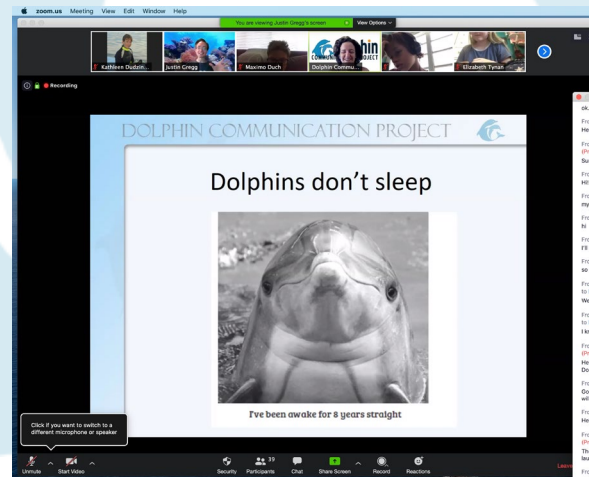
Webinars & DCP styles - in photos!



Aidan watches the DCP webinar with Annette from Blue Lagoon Island home of Dolphin Encounters. This webinar was on 28 April 2020, and can be found on the DCP website on our [webinar page](#) and on [YouTube](#)!



Above on the left, Annette models her [DCP Hoo-rag](#) as mask. On the right, we see what Annette's pup, Hunter, thinks of his mom wearing the Hoo-rag. (Everyone's a critic!)



Above on the left, Nicole talks about [spotted dolphin friendships during her May 7th webinar](#), while on the right, Justin shares just one of the [22 Fantastical Facts](#) about dolphins in his recent webinar!

A Special Note from DCP's Founder & Director

A Brief Historical Perspective of DCP!

Submitted by Kathleen Dudzinski, PhD

This year is DCP's 20th anniversary! So much has happened in 20 years. Indeed, so much has happened in the first 20 weeks of this year! We will all certainly remember 2020 for a variety of reasons and I truly hope everyone reading this historical perspective is healthy and safe. Our thoughtfully planned monthly celebrations of DCP's 20th anniversary were somewhat derailed by COVID-19, as were nearly everyone's life and work flow! I'm proud of how the DCP team and our supporters (loyal and new – thank you!) have rallied as we shifted gears and jumped onto the online distribution train. Check out the new webinar and kids science content at www.dolphincommunicationproject.org under the Education tab to read, listen and view our most recent programs. But, before you do that, sit back, grab a snack, and learn a bit more about how DCP came to be ... at least from my perspective.

In 1997, before the Internet was as encompassing as it is today (hard to believe, I know! But I actually started my research career (in 1987) before email and the world wide web were a glimmer in anyone's eye!), I was about to begin my first two-year post-doctoral program in Japan studying Indo-Pacific bottlenose dolphins around Mikura Island, ~200 km south of Tokyo. I received a phone call from MacGillivray Freeman Films (MFF) asking about my research and whether I'd meet with them to discuss a possible film. Medium-length story short, my graduate school advisor, Dr. Bernd Würsig and I traveled to California to meet with the MFF folks. They outlined their plans to make a large format film for IMAX theaters on dolphins. Two and a half weeks before I moved to Japan, I spent two weeks on Bimini with the MFF film crew observing and filming Atlantic spotted dolphins. In conversation with Nowdla Keefe (of Bill & Nowdla Keefe's Bimini Undersea), we set up the fledgling study of those dolphins for the yet-to-be-born DCP.

Three days after returning from Bimini, The Bahamas, I departed for Japan. During my post-doc, I had a couple of trips related to the Dolphins film production – it took 4 years to film all the sequences for the final version. In 2000, the film was being finalized and premieres at various theaters, science centers and museums were being scheduled. Someone at MFF recommended that I set up a website for my research so folks could have access to that information, especially since I was planning to visit 40 different science centers to help introduce and promote the film. Soon after the film opened, in March 2000, DCP was born ... it made sense to set DCP up as a non-profit entity so that I, with colleagues, could continue our research and partner with folks at universities and other centers to expand our research and offer a venue for our education programs

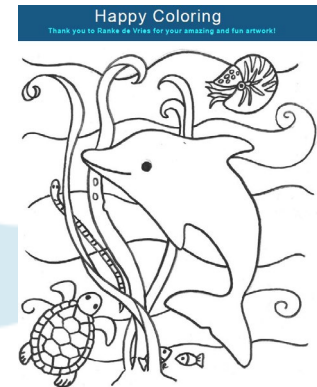
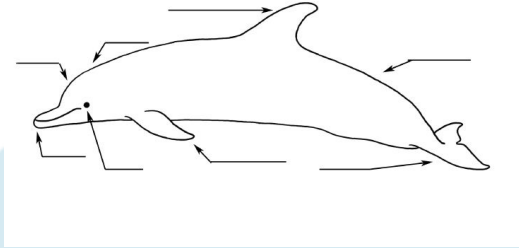
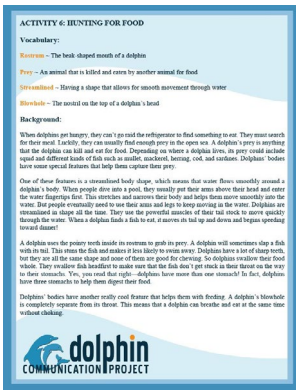
Through DCP, I collaborated with a few different folks to help oversee the research on Bimini and was quite pleased when Kel and Kat did their 2003 internship to Bimini and even more happy when Kel continued to return and assumed the management of that in the early-to-mid 2000's. (I could go into detail here but that story of Bimini is more Kel's than mine to share!) While Kel assumed the mantle of Bimini, I was able to focus more on our studies around Mikura Island, Japan, as well as establish our new study site at Roatan, in collaboration with the Roatan Institute for Marine Sciences (RIMS) at Anthony's Key Resort (AKR). As Kel got established on Bimini, she welcomed a few new students as interns, Justin Gregg among them. Justin joined our team and took over for me at Mikura Island to conduct his doctoral research (in ~2005 for a few of years - and his mastery of linguistics meant his Japanese was so much better than mine!). With Justin and Kel, the foundation for DCP's growth was placed.

....continued on page 10....

Kids Science Activities & more DCP style!

Free, downloadable educational activities now available. [Click here.](#)

Activities include guided lessons with science vocabulary to color pages to word searches.



Karen, a nurse, in her DCP swag! Thank you for your service! Stay safe!

"Pay It Forward"

For every \$15 spent on DCP's website*, DCP will send an Adopt-A-Wild-Dolphin "e-kit" to an essential worker or someone hit hard by COVID-19. Following your purchase, you can choose the recipient(s) or DCP can choose.

*Qualifying purchases include:

[Adopt-A-Wild Dolphin kits](#)

[Any Membership](#)

[Donation \\$15+](#)

[DCP shirts](#) or [Hoo-rags](#)

The spotted dolphins around Bimini are ready for adoption all year round! Great gifts for little ones, even teenagers and grown-ups love seeing the images and video of each dolphin. Plus, you can feel good about making a purchase that directly helps dolphin research, education, and conservation.

Hard Copy (Print) Editions:

\$35 (free shipping in USA, \$20 international shipping)

Includes printed biography, personalized certificate, 5x7 photograph, 2 randomly selected dolphin trading cards, the DCP info booklet, plus links to dolphin videos featuring your adopted dolphin and its Bimini friends!

Electronic Editions:

\$30

Includes link to 3 PDFs: the DCP info booklet, a Photobook featuring the adopt-a-dolphins, plus Adoption Kit PDF with biography, photo, personalized adoption certificate, and links to dolphin videos featuring your adopted dolphin and its Bimini friends!

Visit www.AdoptAWildDolphin.com to select your dolphin and kit edition today.

The Dolphin Pod: New episodes coming!

Join hosts Dr. Justin Gregg and Laura Teasdale as they talk with scientists and experts about everyone's favorite marine mammal: the dolphin. With a sprinkling of comedy to season the science, *The Dolphin Pod* is an enlightening and entertaining deep dive into the world of dolphin science. *The Dolphin Pod* is family-friendly, teen-approved podcast fun! After a 10 year hiatus (so Justin could be a stay-at-home dad), The Dolphin Pod returned with new episodes in 2019. If you love The Dolphin Pod, please consider donating to our GoFundMe campaign - all funds raised directly support production of each new episode of the podcast, and funds received are tax-deductable.

[Click here to listen to The Dolphin Pod](#)

[Click here to donate to The Dolphin Pod](#)

Email us at info@dcppmail.org to find out about your company sponsoring an episode (or more)



What are some of the topics covered on The Dolphin Pod? Click below!

[Dolphins in hot water](#)

[Dolphin Science Quiz: Laura vs Laura](#)

[The classic \(& goofy\) Dolphin Species Song](#)

Why would my company want to sponsor an episode?

With over 1 million listens/views of our podcast content since we first launched, The Dolphin Pod offers your company a platform to speak directly to a large number of potential customers who have an interest in dolphins, the ocean, and the marine environment. Even if your company isn't environmentally focused, your customers are likely to appreciate your commitment to the ocean. Our podcast sponsors are given industry standard advertising/sponsorship placement within the podcast episode, including a 15 second pre-roll (i.e., before the start of the show) and 60-second mid-roll spot for the host(s) to read supplied or improvised ad copy. These ads will be permanently embedded in the podcast audio. Our current rate for an exclusive podcast episode sponsorship package is \$500. In addition to audio ad placement, your company will be listed as a sponsor in our social media (Twitter, Facebook), on the episode's page of the Dolphin Pod section of the DCP website, and on blog postings promoting the episode.

DCP's Brief History continued ...

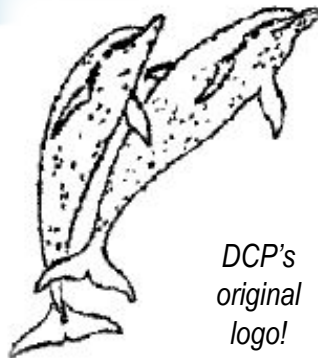
DCP was founded on the dual goals of scientific research and education. We take our research results and funnel them into engaging educational programming. With Justin and Kel and DCP's supportive board, we were able to raise funds to continue our research in several locations (especially Bimini and Roatan) and to also grow our educational programs. Over the years we have partnered with many different schools and students. We developed content for elementary, junior high, and high school students. We even took three different groups of junior high students to three of our field sites (Mikura Island, Roatan, Bimini) after they had participated in a semester-long class. (Check out the DRTs details on the DCP website for more information!)

As our secondary level programs settled into place, we also developed college-level field courses in partnership with one or two universities. The programs are one or two weeks long and the students participate in data collection after learning about the protocols that DCP used to collect our data. Often these programs are offered for credit with the school. And, more than a dozen years after our first field course, I am pleased that DCP is now partnering with eight different universities to regularly offer field courses to undergraduate students for credit! During these programs, the students get first-hand experience with field work. They are introduced to the (potential) rigors of what field research can include. And, I have learned much from them as well. I delight in introducing students to the wonders of science!

DCP may have gotten our start in relation to a documentary film and we have also participated in several smaller-format documentaries over the past 20 years, but I am proud of the fact that we have been true to the science and the methods of our data collection. And that we have been able to make the scientific process interesting and engaging such that folks want to learn more and want to watch more about what and how we do our research. I very much look forward to the next 20 years and to encouraging more students

to delight in science!

In the next issue of the Gazette, I'll share a bit more detail about the history surrounding our field courses. After all, I can't include everything in just one issue! Here are a few photos from over the years.



*DCP's
original
logo!*



DCP Announcements!

Publication Updates

And we have three manuscripts in review for publication consideration:

Dudzinski, KM, Ribic, CA, Hill, HM, Bolton, T (in review) Evidence for Individual Differences among Adult Female Dolphins when sharing Pectoral Fin Contacts with their Calves. (to – *Animal Behavior & Cognition*).

Dudzinski, KM, Ribic, CA, Hill, HM, Bolton, T (in review) Dolphin Calf Initiated Pectoral Fin Contact with Kin and Non-kin. (to – *Animal Behavior & Cognition*).

Themelin, M, Ribic, CA, Melillo-Sweeting, K, Dudzinski, KM (in review). New approach for relationship quality study in dolphins. (to – *Behavioural Processes*)



Congratulations, Skylar Muller!

This May, Skylar completed her master's degree thesis with DCP at Nova Southeastern University. Skylar's thesis title is: "Atlantic Spotted Dolphin (*Stenella frontalis*) and Bottlenose Dolphin (*Tursiops truncatus*) Nearshore Distribution, Bimini, The Bahamas."

THE DOLPHIN COMMUNICATION PROJECT CHARITABLE SOLICITATION NUMBER CH42894, MEETS ALL REQUIREMENTS SPECIFIED BY THE FLORIDA SOLICITATION OF CONTRIBUTIONS ACT. A COPY OF THE OFFICIAL REGISTRATION AND FINANCIAL INFORMATION MAY BE OBTAINED FROM THE DIVISION OF CONSUMER SERVICES BY CALLING TOLL-FREE (800-435-7352) WITHIN THE STATE OF FLORIDA, OR 850-410-3800 WHEN CALLING OUTSIDE THE STATE. REGISTRATION DOES NOT IMPLY ENDORSEMENT, APPROVAL, OR RECOMMENDATION BY THE STATE.

In-Kind Donations: Our Wish List

Do you have access to any of this equipment? Contact DCP to make an in-kind donation today! (Yup, in-kind donations are tax-deductible, too. Contact your account to learn how.)

* Compact HD Projector (high vis) * Underwater still cameras * SD flash cards * GoPro * Handheld GPS * Office supplies * Frequent flyer miles * Laptop * Giftcards

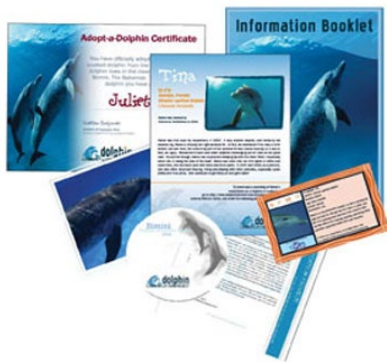


DCP's Florida Solicitation of Contributions registration number is CH42894.

Adopt a Wild Dolphin

www.adoptawilddolphin.com

What's in your Adoption Kit?



An official adoption certificate

Photograph or PDF photobook of your adopted dolphin

Details on how to download dolphin vocalizations from the Bimini adopt-a-dolphins as a ringtone or audio file

Link to video of the Bimini dolphins

Biography of your adopted dolphin

Welcome letter and registration info

Information Booklet with Atlantic spotted dolphin fact sheet and info about the Dolphin Communication Project

Dolphin trading card sample (hard copy only)

Holiday gift ideas
www.cafepress.com/holidaydolphin

Dolphins currently up for adoption



Adopting a wild dolphin with DCP helps to fund:

The purchase of new research equipment (e.g., cameras, underwater microphones)

Conservation and education programs on Bimini, in the US and around the world

Publication and dissemination of DCP's research results to the scientific community and the general public

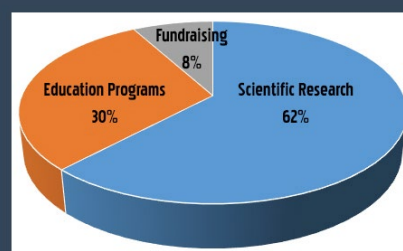
Maintenance of the DCP website, field reports, and our podcast The Dolphin Pod

Classroom education programs for school-aged children including DCP Youth Program, Dolphin Research Trainee, Classroom Connections

Volunteer, ecotour and internship opportunities for the public



Where does money raised from donations, dolphin adoptions and field courses go?



Adopt-a-wild-dolphin t-shirts
tinyurl.com/y1fx44v



DCP's Adopt-a-Dolphin Program

DCP currently has ~25 dolphins from our catalog of Atlantic spotted dolphins residing around Bimini, The Bahamas available for adoption. While adoptive parents do not get to take their dolphins home, they will receive a certificate of adoption, a photo of their adopted dolphin, some facts about Atlantic spotted dolphins, information about DCP and our research around Bimini and a dolphin video. They will also receive the most recent edition of the Dolphin Gazette, DCP's quarterly newsletter, announced quarterly by eblast. Be sure to send us your email address, or subscribe online at the newsletter page!.

All dolphin adoptions through DCP help support our dolphin research throughout the world, and the creation and implementation of local, national, and international education programs for students of all ages.

Each adoption costs \$30 and lasts for one year. Become a spotted dolphin parent today & support valuable scientific research!.

Yes! I want to adopt a dolphin! Some of our dolphins are listed below. For a complete list & all dolphin biographies, check out www.adoptawilddolphin.com
Juliette | Niecey | Paul | Swoosh | Milo | Cerra | Inka | Tina | Lumpy | Lil' Jess | Freckles
| Split Jaw | Noodle | Seabeagle | Sulfur | Vee

I would like to adopt a dolphin: \$35 for one year. **Dolphin name:** _____
Please cut out and mail your order form, with check, to DCP at P.O. Box 7485, Port St. Lucie, FL 34985.
Credit card payment is available online through our web site at www.dolphincommunicationproject.org

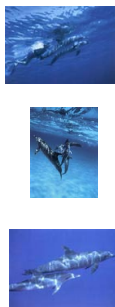
Please **SEND** my adoption package to: If this is a gift, please note gift **GIVER** address:

Name: _____ Name: _____
Address: _____ Address: _____

City: _____ State: _____ Zip: _____ City: _____ State: _____ Zip: _____
Email: _____ Email: _____



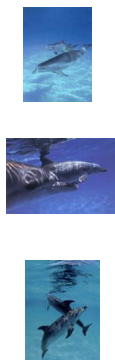
Postcards
\$1.00 each/ 3 for \$2



Iruka Gear
To purchase Iruka gear visit www.cafepress/irukagear



Notecards
\$2.50 each/ 3 for \$6



DCP Gear
To purchase DCP gear, visit www.cafepress/dcpgear



Membership

Sustaining Memberships:
Donate from \$5 to \$100/month to receive a special gift!

Annual Memberships :
Student: \$20
Individual: \$30
Family: \$45
Supporting: \$75
Contributing: \$150
Patron: \$500

Supporting, Contributing & Patron Members receive a DVD copy of *Dolphins - The Lighter Side*. Contributing & Patron Members also receive a photo album featuring images and information about all of our adopt-a-wild-dolphins. All gifts subject to availability and may change.

Visit www.dolphincommunicationproject.org to become a member today!

Support DCP's research efforts by purchasing some of the many products that we offer for sale. All products seen here are also available on our website: www.dolphincommunicationproject.org All profits from the sale of these products will directly fund DCP's research and education efforts. DCP is a nonprofit organization.



Throw-back Word Search

How many words can you find?

This word search was created by Kathleen more than 20 years ago! See if you can find all the words ... it might not be as easy as you think! The list of words is on the next page. Enjoy!

Words read backwards, forwards, up, down, and diagonally backwards and forwards. All words relate in some way to marine mammals.

A T O N S C E G N O I T A R I P S E R E S E A R C H X T
H M S H U M P B A C K D U E I C A P T I V I T Y O R C K
A A T B N A E C A T E C A H S R E D E E F R E T L I F C
R R R H A W A I I R J R S K E L P M O L U K E P S B G I
P I Y P L A H W R A N Y G H T E E T U R B O C H D L R D
S N T L O X A Q U A R I U M I R D K A G S P H F E U E Y
E E U N T O P E R O W G N S N T E M D W C A H W E C Y B
A M N I T J N U T N R N G R U S Q U I D X L L A P A H D
L A A H T F V C I S A I U E O Z U K C A B N I F D K O M
Z M S P K O A H E E H D L L D Q A Y O B L S T R I E U O
S M E L V F P T F C F N A A O N R Y L O O P E D V N N E
E A I O L L E I A E M A T H N E I O F W W E Q N E O D N
I L N D O I S E J I S E R W T B B N I H H R D A R I E I
W S I D H C R A N O T T A C O L O H C E O M J L S T S A
H R N E E B T K W R H S Y A C U E O R A L A E N I A W M
A K G D V E E H Z C R B A L E E N D G D E C L E I R H F
L K R I G N L S O A L H R F T S T U O T S E A E S G E O
E D U S K Y D S L U D E A M E O L J S N D T H R D I D F
I B C E A O Q O B I T H S R I E O U A K O I N G E M D L
T E U T S A N B L T U O V P B L A N T A R C T I C A E U
E T H I P E E G O N M A P A T O L I P O X E H R P I D G
C E E H O R T A D I T U R W N E R V O E E R G L M E O A
O C N W U B E R X I U T P O H Y P S D O P M I R H S O K
E I D A T S S S O E R L O B T A I L E Z O I R W E M L S
A T B T A G E N B A S D H S O C I A L A N I M A L S B A
H S W E I N C V Y H I A E J H C T A W E L A H W N I M L
C Y A R G O R E S I I O O P P R O P U O K H A T E C I T C R A
R M J A L S E I C E P S D E R E G N A D N E K E I I A W
A S T L O B E V O T S P E R M W H A L E C B S A N L W H

Throw-back Word Search ~ The Word List

How many words can you find?

Alaska	Antarctica	Aquarium	Archaeoceti
Arctic	Baleen	Beluga	Blowholes
Blubber	Blue	Bowhead	Breach
Calf	Captivity	Cetacean	Conservation
Deep divers	Dolphin	Dorsal fin	Dusky
Echolocation	Endangered species	Eskimos	Factory ship
Filter feeders	Finback	Flukes	Gray
Greenland	Greyhound	Gulf of Maine	Harbor seal
Harp seal	Harpoon	Hawaii	Herd
Humpback	Jawbone	Kelp	Krill
Lobtail	Marine mammals	Migration	Minke
Moby dick	Mysticete	Narwhal	Odontocete
Orca	Pilot	Pod	Porpoise
Research	Respiration(?)	Right whale	Sand eel
Sea otter	Sei Whale	Shrimp	Social animals
Spermaceti	Sperm whale	Songs	Spout
Spy hop	Squid	Stovebolts	Stranding
Teeth	Tons	Tuna seining	Tursiops
Ungulate	Warmblooded	Water	Whalers(?)
Whale watch	White sided dolphin		

NOTE: (?) means that this word may be difficult to find.